

2012

TUSHI MONTGOMERY ARCHITECT
 7649 LYNNALE AVENUE, SUITE 111
 MINNEAPOLIS, MINNESOTA 55423-4818
 612.661.9636 FAX: 612.661.9630
 WWW.TMARCHITECTS.COM

HAMBURG BUILDING
 21860 HAMBURG AVE
 LAKEVILLE, MINNESOTA

PREPARED FOR:

ALL ARCHITECTURAL AND ENGINEERING DRAWINGS ARE IN CONFIDENTIAL AND DISSEMINATION MAY NOT BE MADE WITHOUT PRIOR WRITTEN CONSENT OF THE ARCHITECT. ALL COMMON LAW RIGHTS OF COPYRIGHT AND OTHERWISE ARE HEREBY SPECIFICALLY RESERVED. I HEREBY CERTIFY THAT THIS PLAN, SPECIFICATION OR REPORT WAS PREPARED BY ME OR UNDER MY DIRECT SUPERVISION AND THAT I AM A DAILY LICENSED ARCHITECT UNDER THE LAWS OF THE STATE OF MINNESOTA.
 PRINT NAME: ANDREW K. KLEIN
 SIGNATURE: Andrew Klein
 DATE: 7/26/12 LICENSE #200120

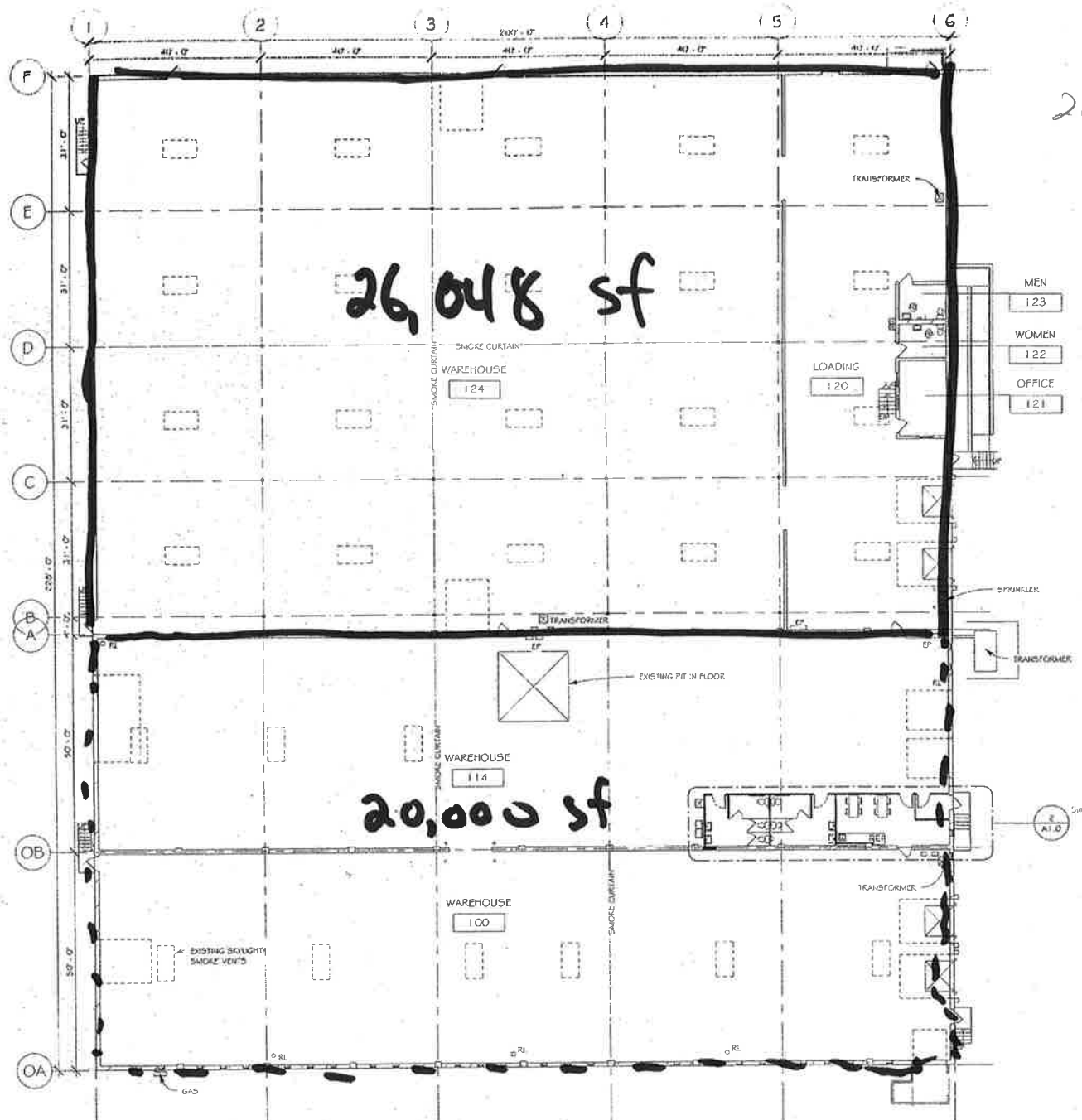
Revisions & Addendums
 Date: 2012 06-1
 2012 07-2
 PERMIT 2012 07-2

Revisions & Addendums

21200CA

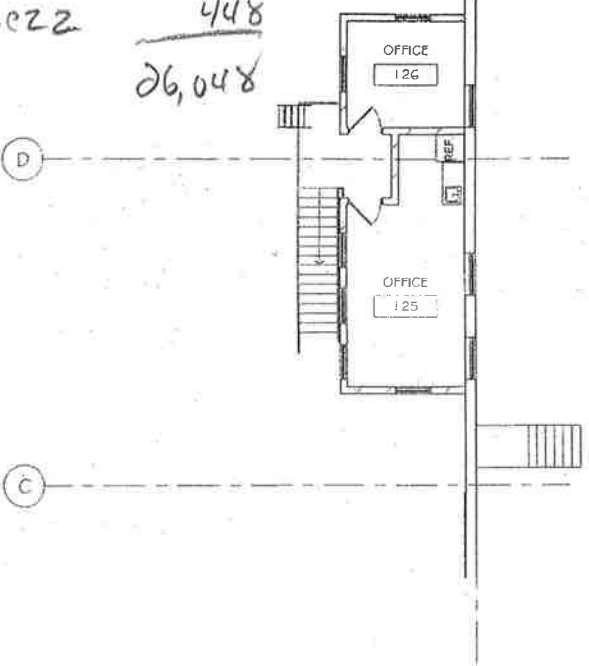
DEMOLITION PLAN / FLOOR PLAN

A1.0



1 PROPOSED FLOOR PLAN
 SCALE 1/16" = 1'-0"

200x128 = 25,600
 mezz 448
 26,048



3 MEZZANINE FLOOR PLAN
 SCALE 1/8" = 1'-0"

AREA CALCULATIONS	AREA	OCCUPANCY TYPE	OCC. LOAD FACTOR	OCCUPANCY LOAD
OFFICE - GROUND FLOOR	1,148 SF	B	100	12
OFFICE - MEZZANINE	448 SF	B	100	5
WAREHOUSE	44,452 SF	F-1	200	224
TOTAL TENANT AREA =	46,048 SF			241

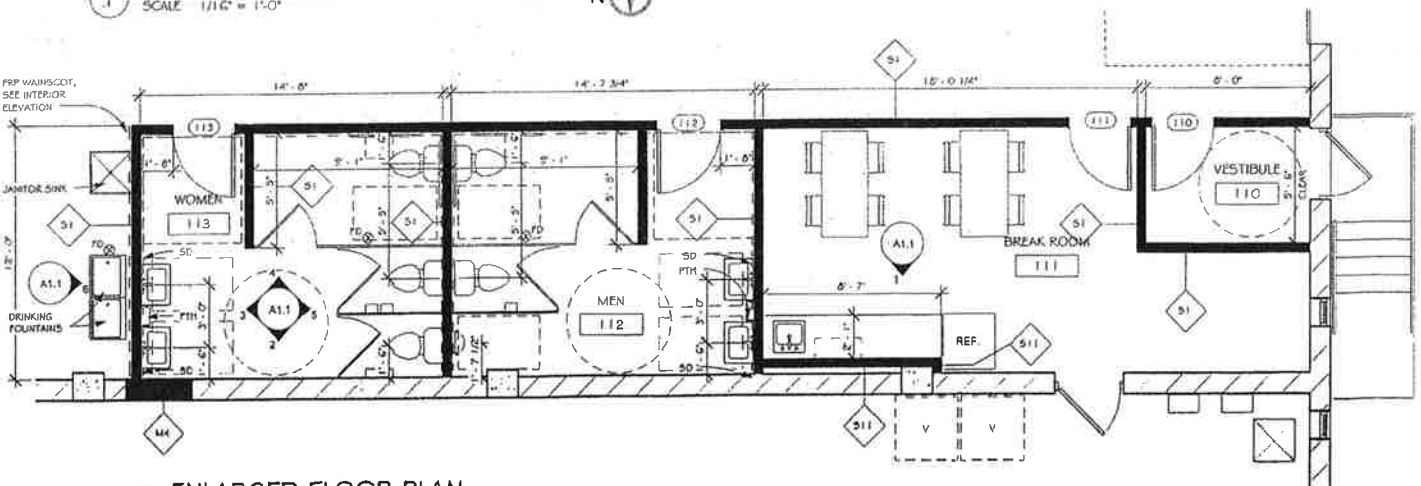
CODE INFORMATION: IBC 2006; T1N SBC JULY 10, 2007

TYPE OF CONSTRUCTION	II-B
TOTAL BUILDING FOOTPRINT AREA	46,500 SF
IBC TABLE 508	B OCCUPANCY F-1 OCCUPANCY
BASIC ALLOWABLE AREA	23,000 SF 15,500 SF
AREA MODIFICATIONS:	
IBC 506.3 (INCREASE OF 300% W/ AUTOMATIC SPRINKLERS)	69,000 SF 46,500 SF
TOTAL ALLOWABLE AREA	92,000 SF 62,000 SF

IBC SECTION 508.3.2 USING F-1 OCCUPANCY AS MOST RESTRICTIVE (NONSEPARATED OCCUPANCIES) OCCUPANCY FOR ENTIRE BUILDING, NO SEPARATION REQUIRED
 BUILDING TENANT AREA OF 46,048 SF < 62,000 SF

PLUMBING CALCULATIONS:
 OFFICE: 1,148 + 448 = 1,596 SF / 1000/2 = 8 MEN & 8 WOMEN (8 OCC / 25 OCC/WG = 0.32 WC)
 WAREHOUSE: 44,452 SF / 2000/2 = 112 MEN & 112 WOMEN (112 OCC / 100 OCC/WG = 1.12 WC)
 TOTAL: 0.32 + 1.12 = 1.44 WC REQUIRED FOR EACH GENDER
 WATER CLOSETS: (4 WC FIXTURES PROVIDED FOR EACH GENDER)

EXIT ACCESS REQUIREMENTS:
 IBC 1014.3 - EXC. F1
 COMMON PATH OF EGRESS TRAVEL < 100'
 DISTANCE PROVIDED < 100'
 IBC TABLE 1015.1
 TWO EXITS REQUIRED (241 OCCUPANTS) 49
 2 EXITS REQUIRED THROUGHOUT SPACE: 9 PROVIDED
 IBC 1015.2.1 - EXC. #2
 SEPARATE DISTANCE BETWEEN EXITS SHALL BE > 1/3 DIAGONAL DISTANCE
 DISTANCE PROVIDED > 1/3
 IBC TABLE 1016.1:
 MAXIMUM TRAVEL DISTANCE W/AUTOMATIC SPRINKLERS: 250'
 MAXIMUM PROVIDED DISTANCE IS < 250'
 IBC TABLE 1017.1:
 WITH B, S & F OCCUPANCIES & AUTOMATIC SPRINKLERS, NO FIRE RESISTIVE RATING REQUIREMENT FOR CORRIDORS



2 ENLARGED FLOOR PLAN
 SCALE 1/4" = 1'-0"