

JOHNSON BUILDING OFFICE SUITES

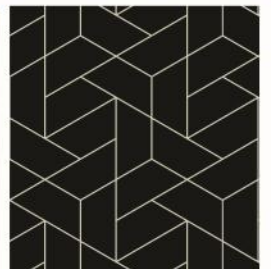
8500 210TH STREET WEST, LAKEVILLE, MN 55044

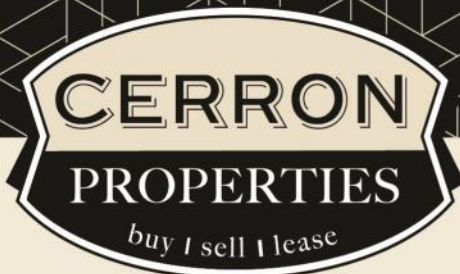


FOR LEASE | OFFICE SPACE



CERRON Commercial Properties, LLC | 21476 Grenada Avenue | Lakeville, MN 55044
WWW.CERRON.COM





CERRON Commercial Properties, LLC
21476 Grenada Avenue
Lakeville, MN 55044
www.CERRON.com

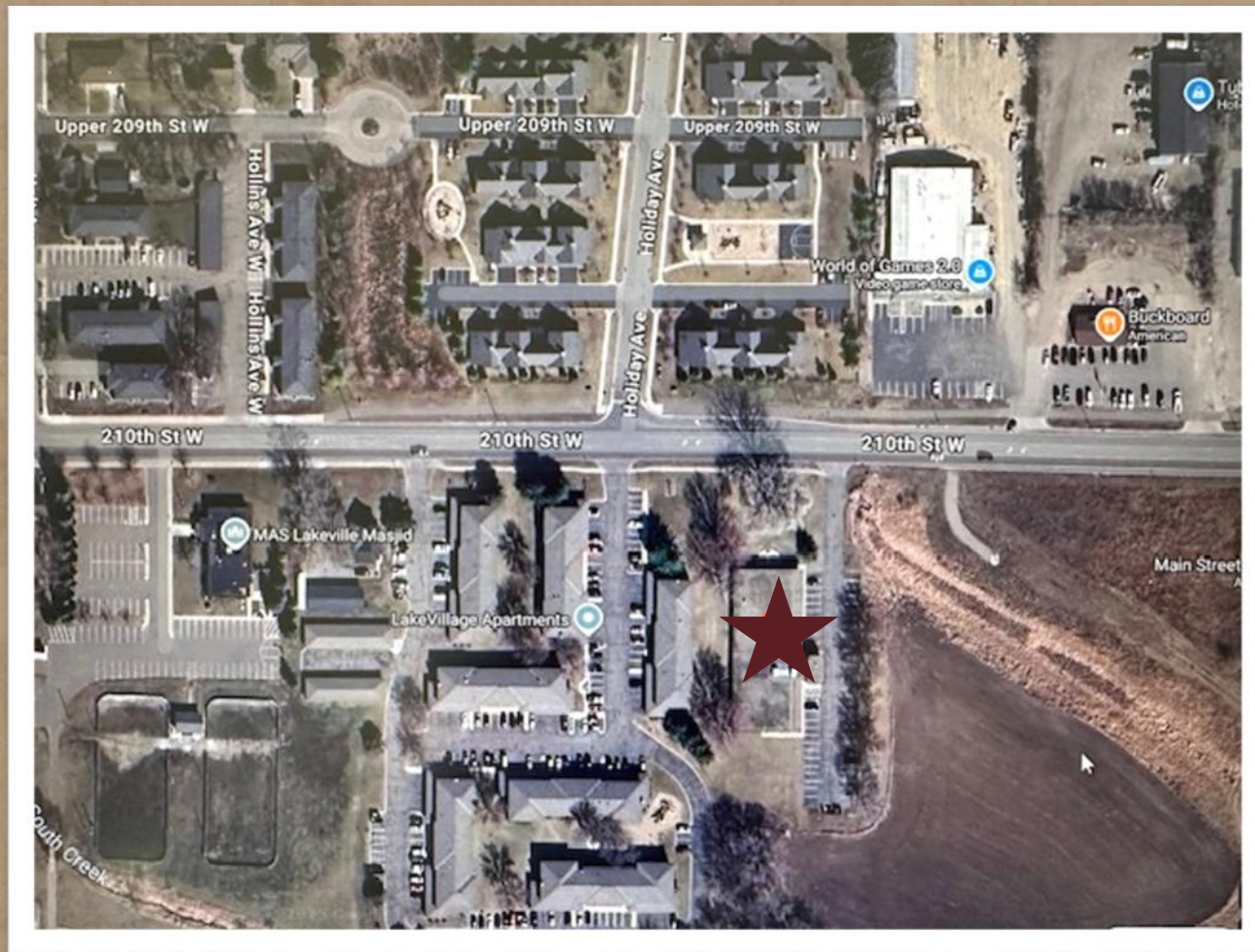
■ PROPERTY HIGHLIGHTS

- One (1) office suite available:
 - **Suite 130**
 - 1,400 SF—\$2,916/month
- Monthly rate are calculated as gross lease rate, utilities included
- First Floor Access
- Monument signage, suite signage
- Great downtown Lakeville location
- Near Restaurants
- 24/7 Access
- Ample Parking

JOHNSON BUILDING OFFICE SPACE

8500 210TH STREET WEST, LAKEVILLE, MN 55044

FOR LEASE | OFFICE SUITES



DISCLAIMER: The information contained herein is deemed reliable but is not guaranteed. We have not verified its accuracy nor do we make any warranty or representation about it. You and your tax and legal advisors should conduct your own investigation of the property and transaction.



For more information,
Please contact:
Roz Peterson
612.708.5281
rozp@cerron.com

JOHNSON BUILDING OFFICE SUITES

8500 210TH STREET WEST, LAKEVILLE, MN 55044

SUMMARY

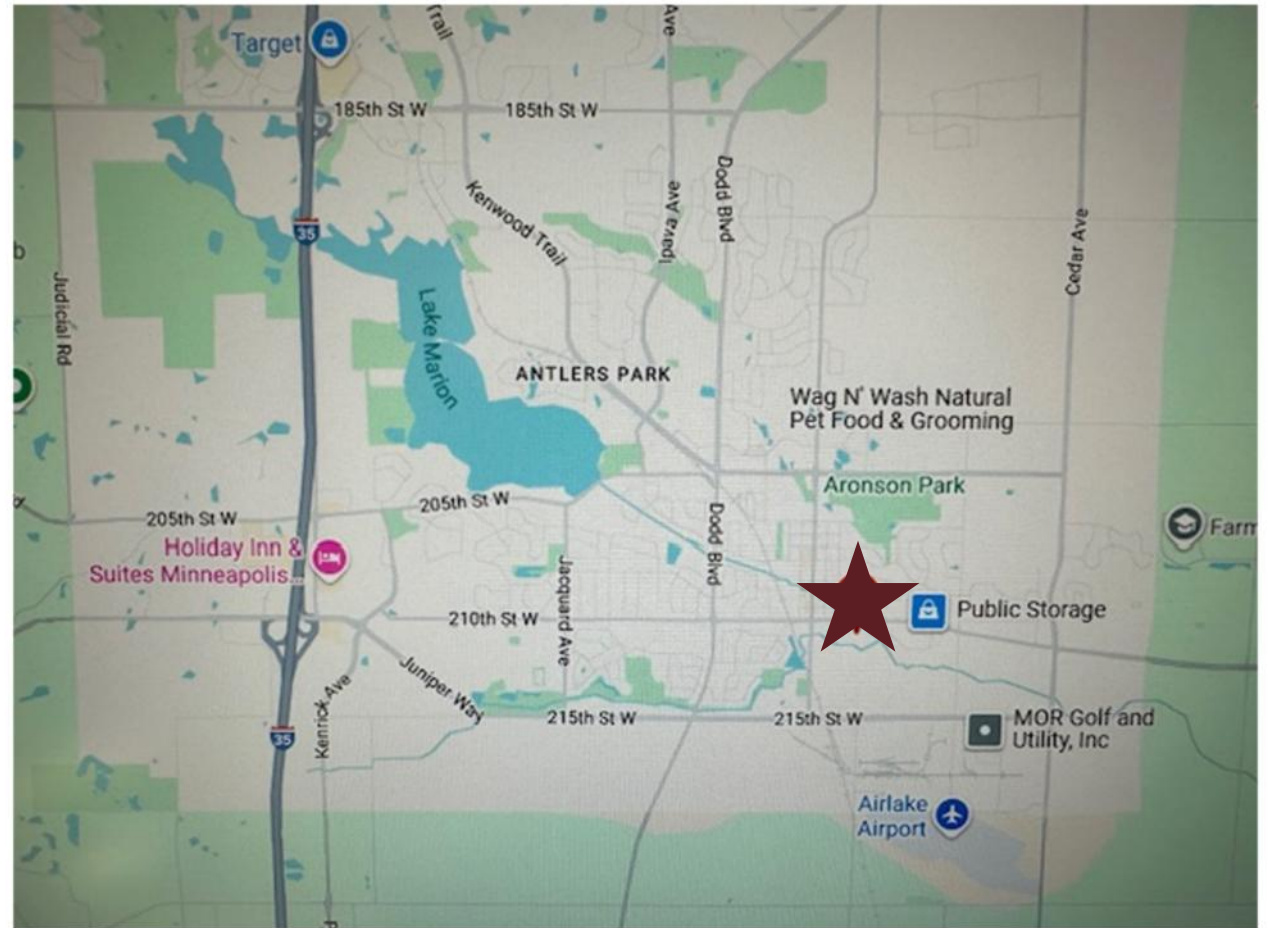
Near downtown Lakeville, multiple restaurant options, Airlake Industrial Park, Lakeville Airport and 3 1/2 miles to Interstate 35

■ DEMOGRAPHICS:

	1 Mile	3 Mile	5 Mile
Population	3,330	12,419	30,989
Median HH Income	\$75,180	\$91,163	\$104,210
Avg HH Income	\$75,360	\$98,161	\$107,845

■ TRAFFIC COUNTS:

- 6,446 vpd @ 210th St W (to the east)
- 4,370 vpd @ Holyoke & 210th St W
- 6,533 vpd @ 210th St W & Howland



DISCLAIMER: The information contained herein is deemed reliable but is not guaranteed. We have not verified its accuracy nor do we make any warranty or representation about it. You and your tax and legal advisors should conduct your own investigation of the property and transaction.

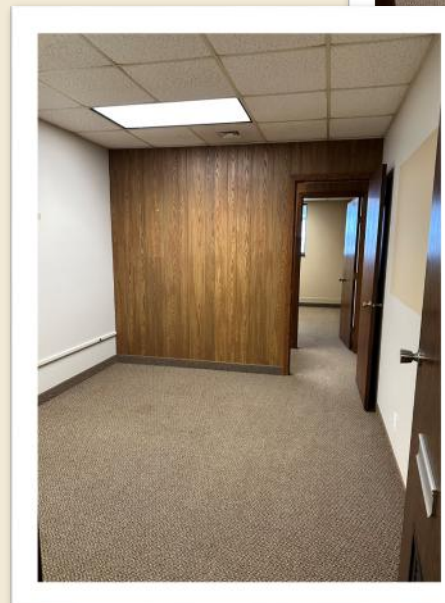


For more information,
Please contact:
Roz Peterson
612.708.5281
rozp@cerron.com

INTERIOR PICS

JOHNSON BUILDING OFFICE SUITES

8500 210TH STREET WEST, LAKEVILLE, MN 55044



DISCLAIMER: The information contained herein is deemed reliable but is not guaranteed. We have not verified its accuracy nor do we make any warranty or representation about it. You and your tax and legal advisors should conduct your own investigation of the property and transaction.



For more information,
Please contact:
Roz Peterson
612.708.5281
rozp@cerron.com

EXTERIOR PICS

JOHNSON BUILDING OFFICE SUITES

8500 210TH STREET WEST, LAKEVILLE, MN 55044



DISCLAIMER: The information contained herein is deemed reliable but is not guaranteed. We have not verified its accuracy nor do we make any warranty or representation about it. You and your tax and legal advisors should conduct your own investigation of the property and transaction.



For more information,
Please contact:
Roz Peterson
612.708.5281
rozp@cerron.com

JOHNSON BUILDING OFFICE SUITES

8500 210TH STREET WEST, LAKEVILLE, MN 55044

FLOOR PLAN—#130

Suite 130

1,400 SF

3 private offices

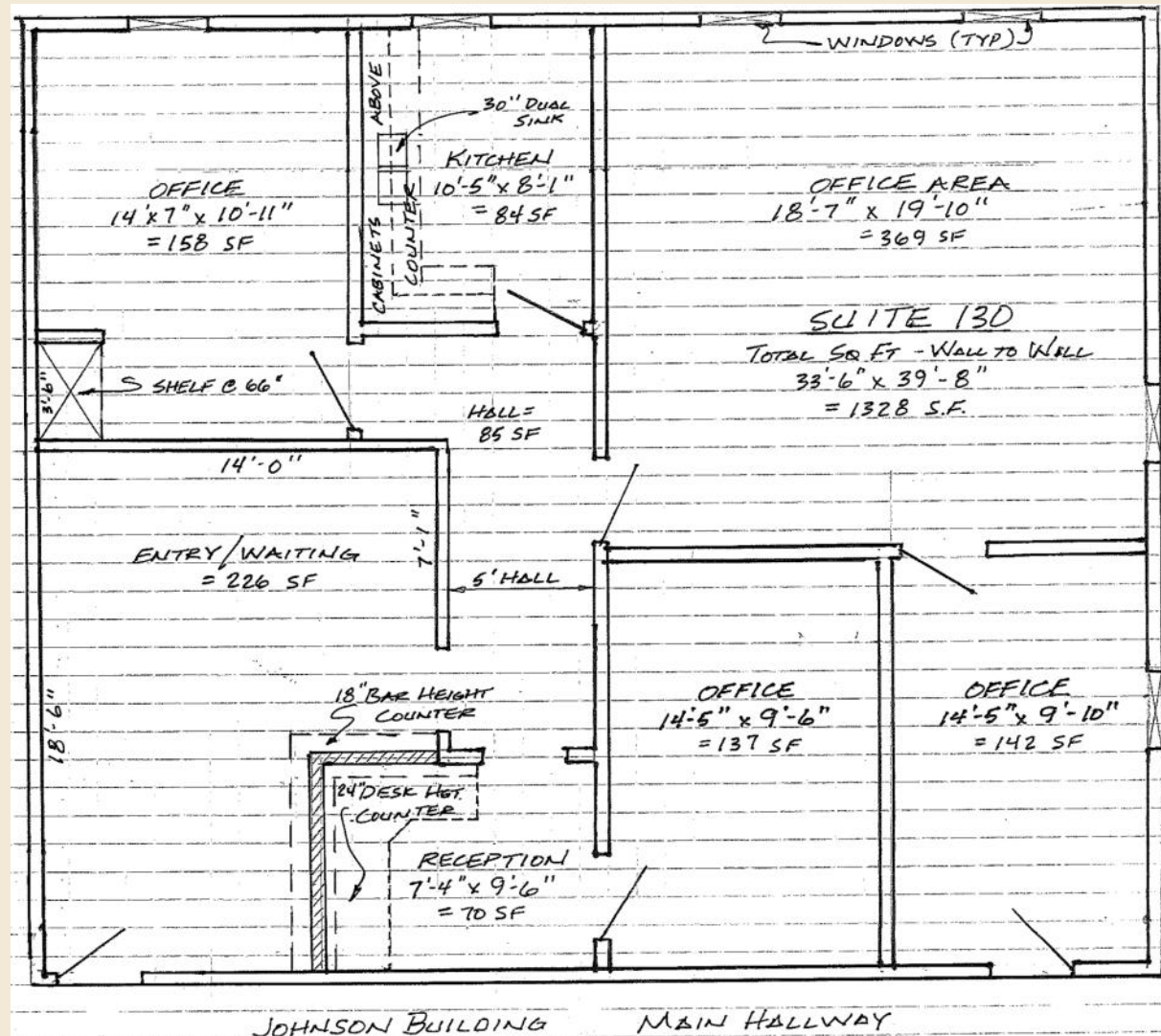
Reception

Conference room

Kitchen

Corner office space on
the first floor

\$2,917/month gross
(everything included
except communica-
tions)



DISCLAIMER: The information contained herein is deemed reliable but is not guaranteed. We have not verified its accuracy nor do we make any warranty or representation about it. You and your tax and legal advisors should conduct your own investigation of the property and transaction.



For more information,
Please contact:
Roz Peterson
612.708.5281
rozp@cerron.com

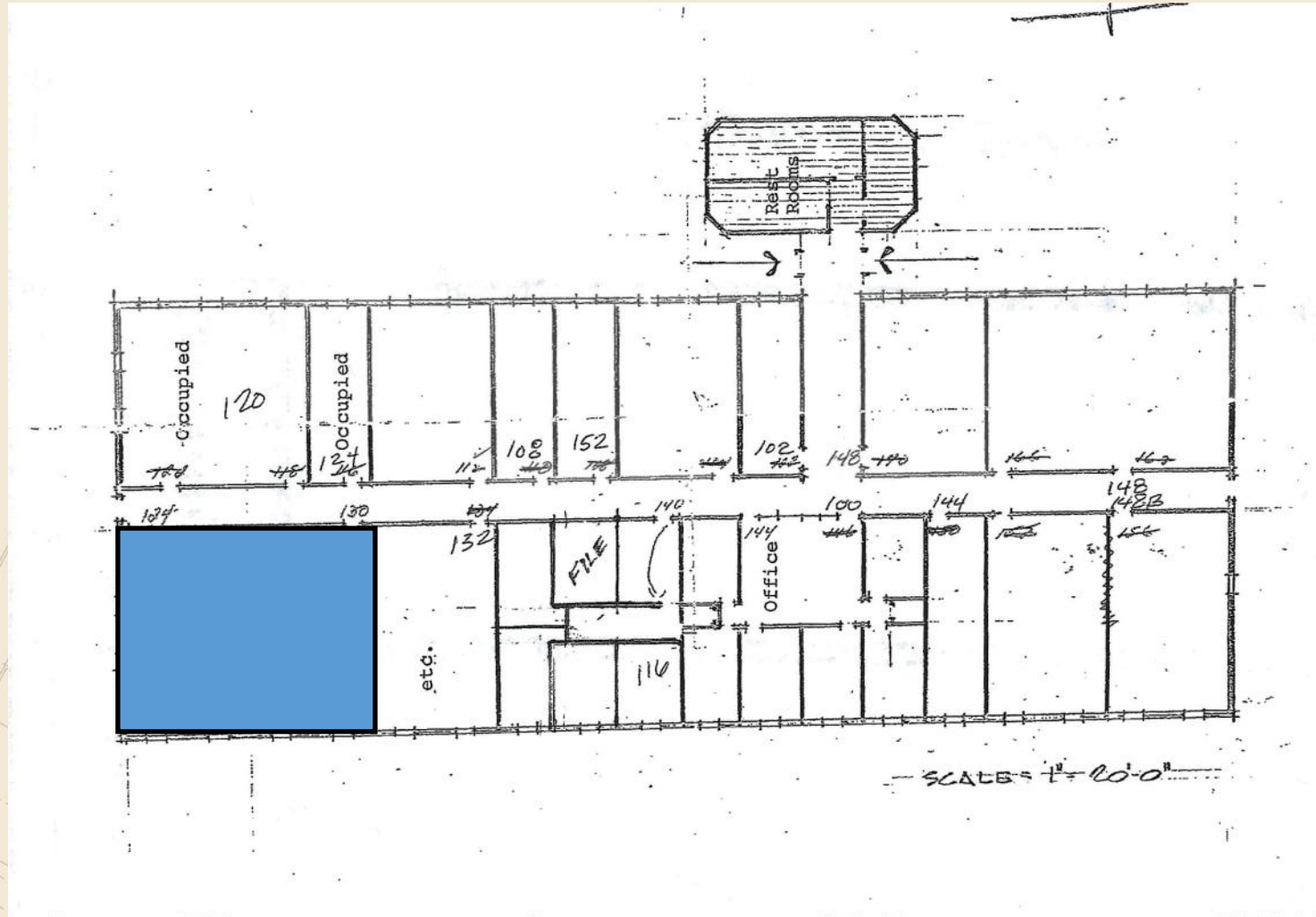
JOHNSON BUILDING OFFICE SUITES

8500 210TH STREET WEST, LAKEVILLE, MN 55044

BUILDING FLOOR PLAN

Suite 130

1,400 SF



DISCLAIMER: The information contained herein is deemed reliable but is not guaranteed. We have not verified its accuracy nor do we make any warranty or representation about it. You and your tax and legal advisors should conduct your own investigation of the property and transaction.



For more information,
Please contact:
Roz Peterson
612.708.5281
rozp@cerron.com

let's get started!

CERRON COMMERCIAL PROPERTIES, LLC

Roz Peterson | 612.708.5281 | rozp@cerron.com



WWW.CERRON.COM