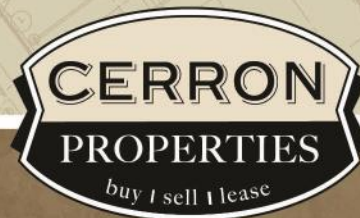


CHERRYWOOD CENTRE—OFFICE/RETAIL SPACE

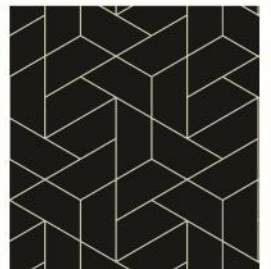
6001 EGAN DRIVE, SAVAGE, MN 55378

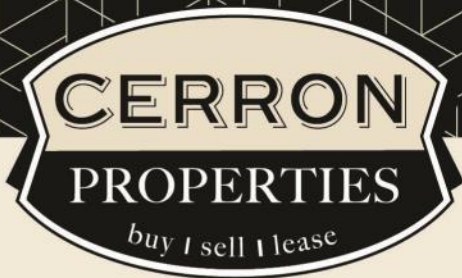


FOR LEASE | OFFICE / RETAIL



CERRON Commercial Properties, LLC | 21476 Grenada Avenue | Lakeville, MN 55044
WWW.CERRON.COM





CERRON Commercial Properties, LLC
21476 Grenada Avenue
Lakeville, MN 55044
www.CERRON.com

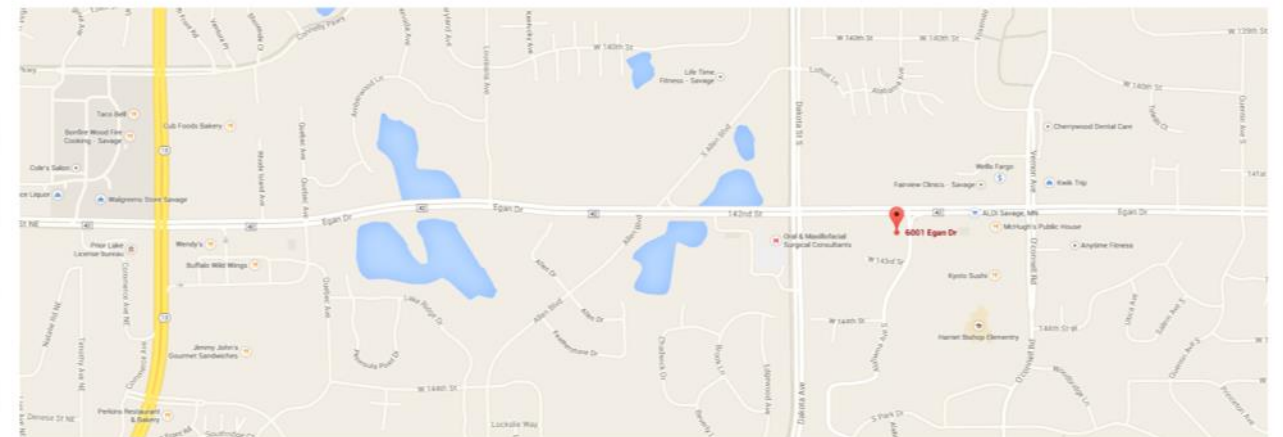
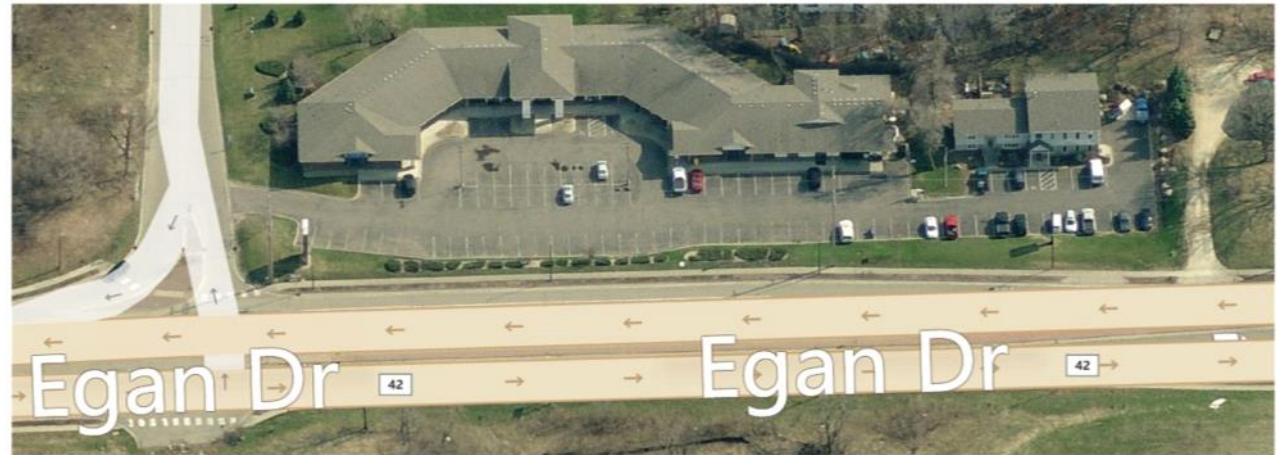
■ PROPERTY HIGHLIGHTS

- Current Availability:
 - *Suite 140—approx. 1,400 SF
\$2,479/month (includes in-suite bathroom & kitchenette)
 - *Suite 191—approx. 563 SF
\$1,306/month
 - *Suite 270—approx. 510 SF
\$810/month (2 privates and reception space)
- Great visibility on County Rd 42
- Traffic counts: 30,000 cars/day
- Office & Retail frontage space
- Pylon signage available
- Next to O'Connell Square
- Lunch room available

CHERRYWOOD CENTRE—OFFICE/RETAIL SPACE

6001 EGAN DRIVE, SAVAGE, MN 55378

FOR LEASE | OFFICE / RETAIL



DISCLAIMER: The information contained herein is deemed reliable but is not guaranteed. We have not verified its accuracy nor do we make any warranty or representation about it. You and your tax and legal advisors should conduct your own investigation of the property and transaction.



For more information,
please contact:
Bruce Rydeen
952.469.9444
brucer@cerron.com

PROPERTY PHOTOS

CHERRYWOOD CENTRE—OFFICE/RETAIL SPACE

6001 EGAN DRIVE, SAVAGE, MN 55378



DISCLAIMER: The information contained herein is deemed reliable but is not guaranteed. We have not verified its accuracy nor do we make any warranty or representation about it. You and your tax and legal advisors should conduct your own investigation of the property and transaction.



For more information,
please contact:
Bruce Rydeen
952.469.9444
brucer@cerron.com

SUITE 140 PHOTOS

CHERRYWOOD CENTRE—OFFICE/RETAIL SPACE

6001 EGAN DRIVE, SAVAGE, MN 55378



DISCLAIMER: The information contained herein is deemed reliable but is not guaranteed. We have not verified its accuracy nor do we make any warranty or representation about it. You and your tax and legal advisors should conduct your own investigation of the property and transaction.

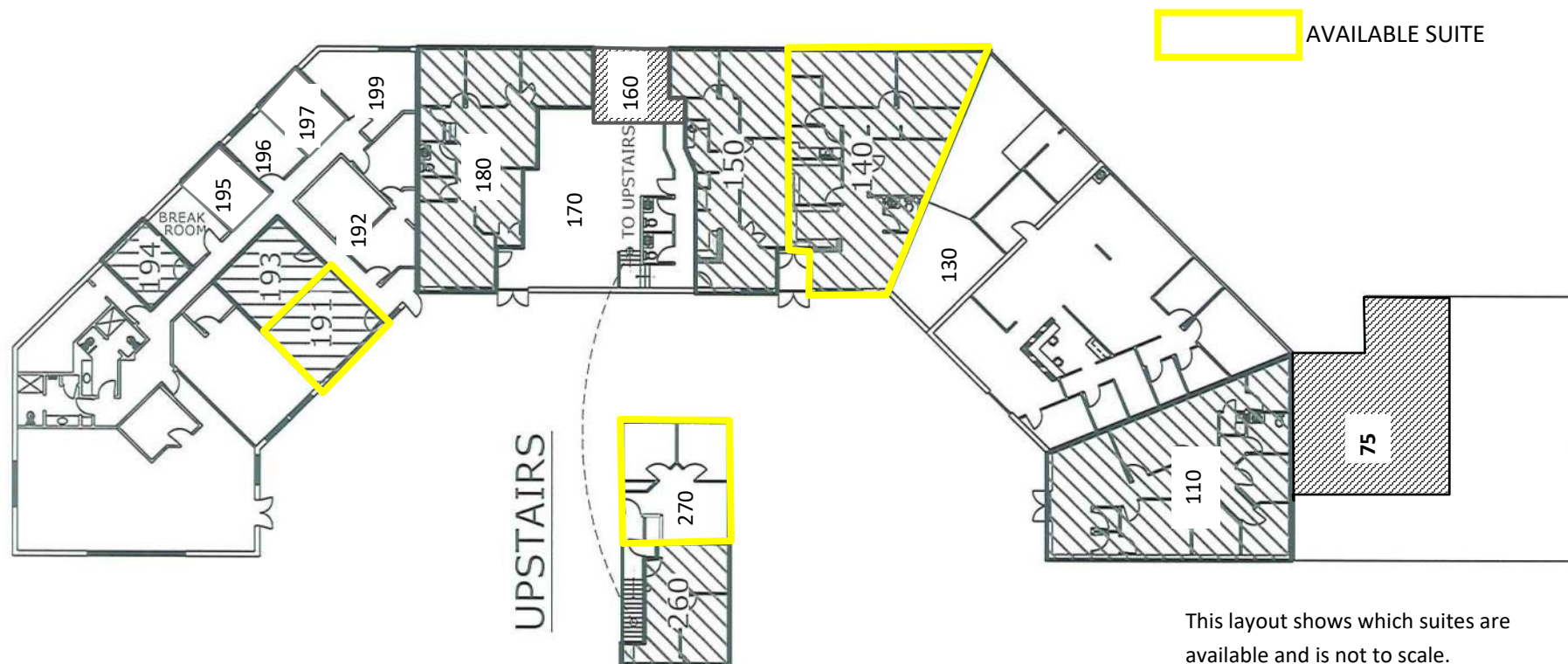


For more information,
please contact:
Bruce Rydeen
952.469.9444
brucer@cerron.com

FLOOR PLAN

CHERRYWOOD CENTRE—OFFICE/RETAIL SPACE

6001 EGAN DRIVE, SAVAGE, MN 55378



DISCLAIMER: The information contained herein is deemed reliable but is not guaranteed. We have not verified its accuracy nor do we make any warranty or representation about it. You and your tax and legal advisors should conduct your own investigation of the property and transaction.



For more information,
please contact:
Bruce Rydeen
952.469.9444
brucer@cerron.com

let's get started!

Bruce Rydeen | 952.469.9444 | brucer@cerron.com

CERRON Commercial Properties, LLC | 21476 Grenada Avenue | Lakeville, MN 55044



WWW.CERRON.COM