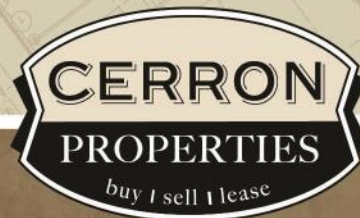


# LAKEVILLE TOWN OFFICES II

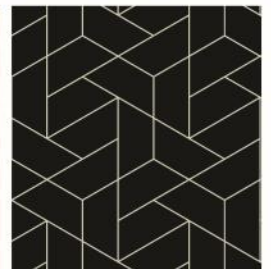
10523-27 165TH STREET WEST, LAKEVILLE, MN 55044

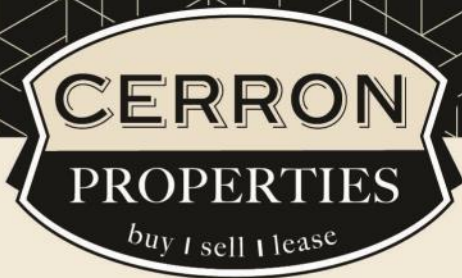


FOR LEASE | OFFICE



CERRON Commercial Properties, LLC | 21476 Grenada Avenue | Lakeville, MN 55044  
[WWW.CERRON.COM](http://WWW.CERRON.COM)





# LAKEVILLE TOWN OFFICES II

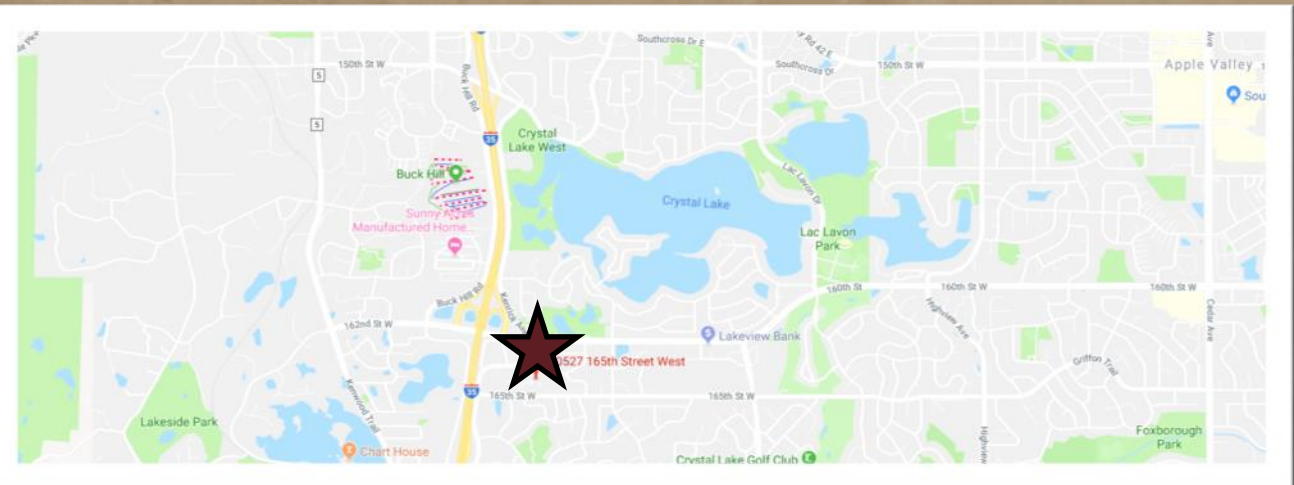
10523-27 165TH STREET WEST, LAKEVILLE, MN 55044

FOR LEASE | PROFESSIONAL OFFICE

CERRON Commercial Properties, LLC  
21476 Grenada Avenue  
Lakeville, MN 55044  
www.CERRON.com

## ■ PROPERTY HIGHLIGHTS

- 1,168—2,861 SF lower level space available
- Multiple options available
- Large windows and lower level outdoor access, as well as main level access
- Excellent location with quick access to I-35 & near many restaurant, hotel and shopping options
- Ample Parking
- Building Security System
- Competitive Lease Rates—see summary on page 3



DISCLAIMER: The information contained herein is deemed reliable but is not guaranteed. We have not verified its accuracy nor do we make any warranty or representation about it. You and your tax and legal advisors should conduct your own investigation of the property and transaction.



For more information,  
please contact:  
**Bruce Rydeen**  
**952.469.9444**  
brucer@cerron.com



# RENT SUMMARY

**LAKEVILLE TOWN OFFICES II**  
10523-27 165TH STREET WEST, LAKEVILLE, MN 55044

	OPTION A	OPTION B	OPTION C
SUITE	10527	10523	10527 & 10523
SIZE & FLOOR	LOWER LEVEL SINGLE SIDE—1,168 SF	LOWER LEVEL SINGLE SIDE—1,693 SF	LOWER LEVEL BOTH SIDES—2,861 SF
LEASE AMOUNT	\$1,655/Month	\$2,400/Month	\$4,055/Month



DISCLAIMER: The information contained herein is deemed reliable but is not guaranteed. We have not verified its accuracy nor do we make any warranty or representation about it. You and your tax and legal advisors should conduct your own investigation of the property and transaction.



For more information,  
please contact:  
**Bruce Rydeen**  
**952.469.9444**  
brucer@cerron.com

# LAKEVILLE TOWN OFFICES II

10523-27 165TH STREET WEST, LAKEVILLE, MN 55044

## LOWER LEVEL PHOTOS



DISCLAIMER: The information contained herein is deemed reliable but is not guaranteed. We have not verified its accuracy nor do we make any warranty or representation about it. You and your tax and legal advisors should conduct your own investigation of the property and transaction.

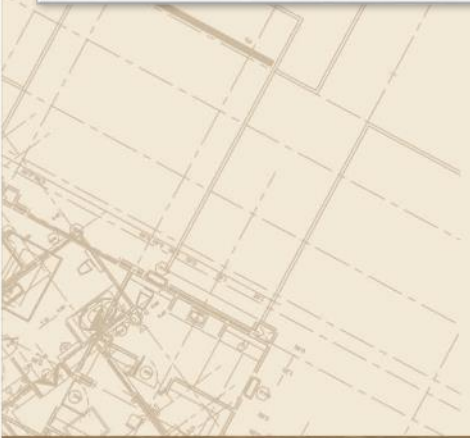
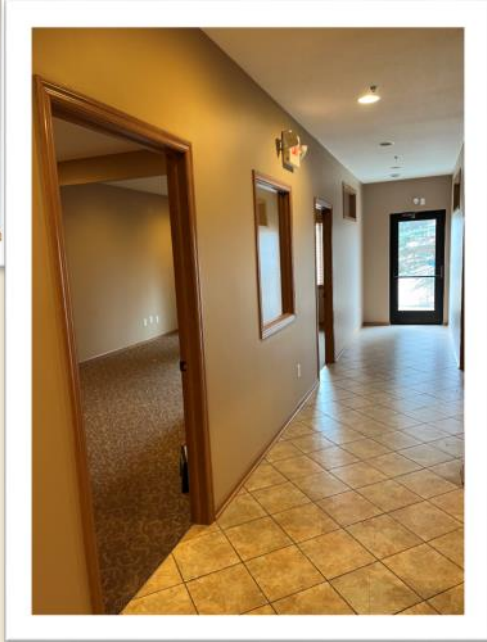
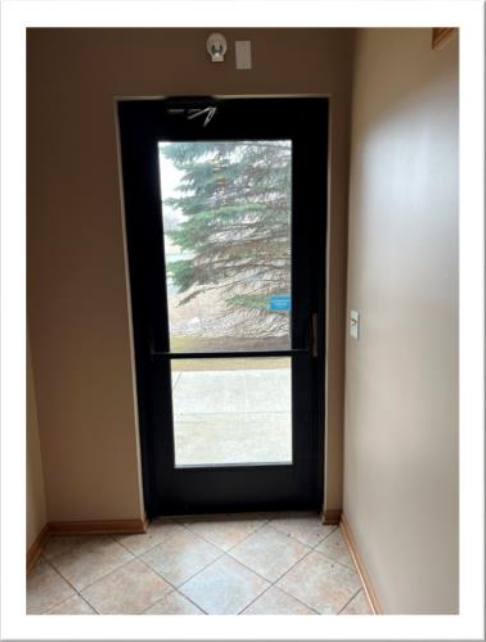
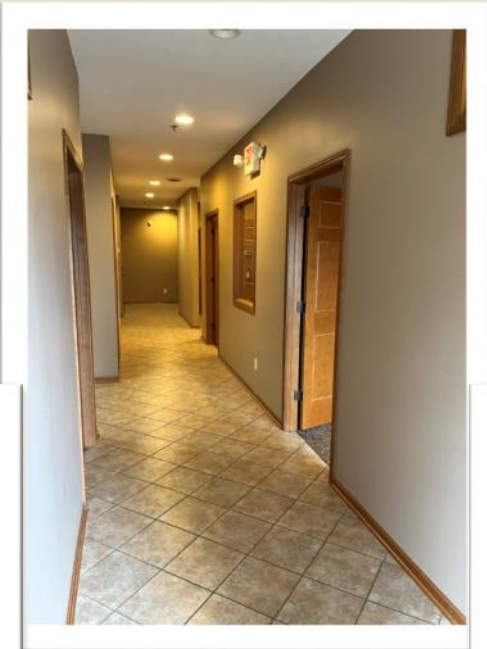
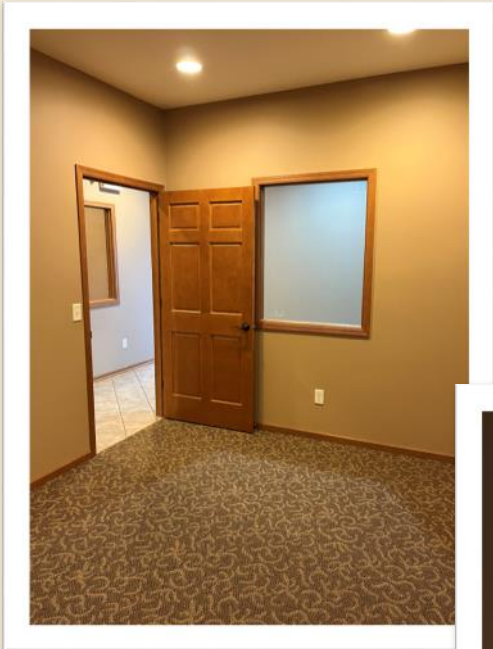


For more information,  
please contact:  
**Bruce Rydeen**  
**952.469.9444**  
brucer@cerron.com

ADD'L LOWER LEVEL PHOTOS

# LAKEVILLE TOWN OFFICES II

10523-27 165TH STREET WEST, LAKEVILLE, MN 55044



DISCLAIMER: The information contained herein is deemed reliable but is not guaranteed. We have not verified its accuracy nor do we make any warranty or representation about it. You and your tax and legal advisors should conduct your own investigation of the property and transaction.



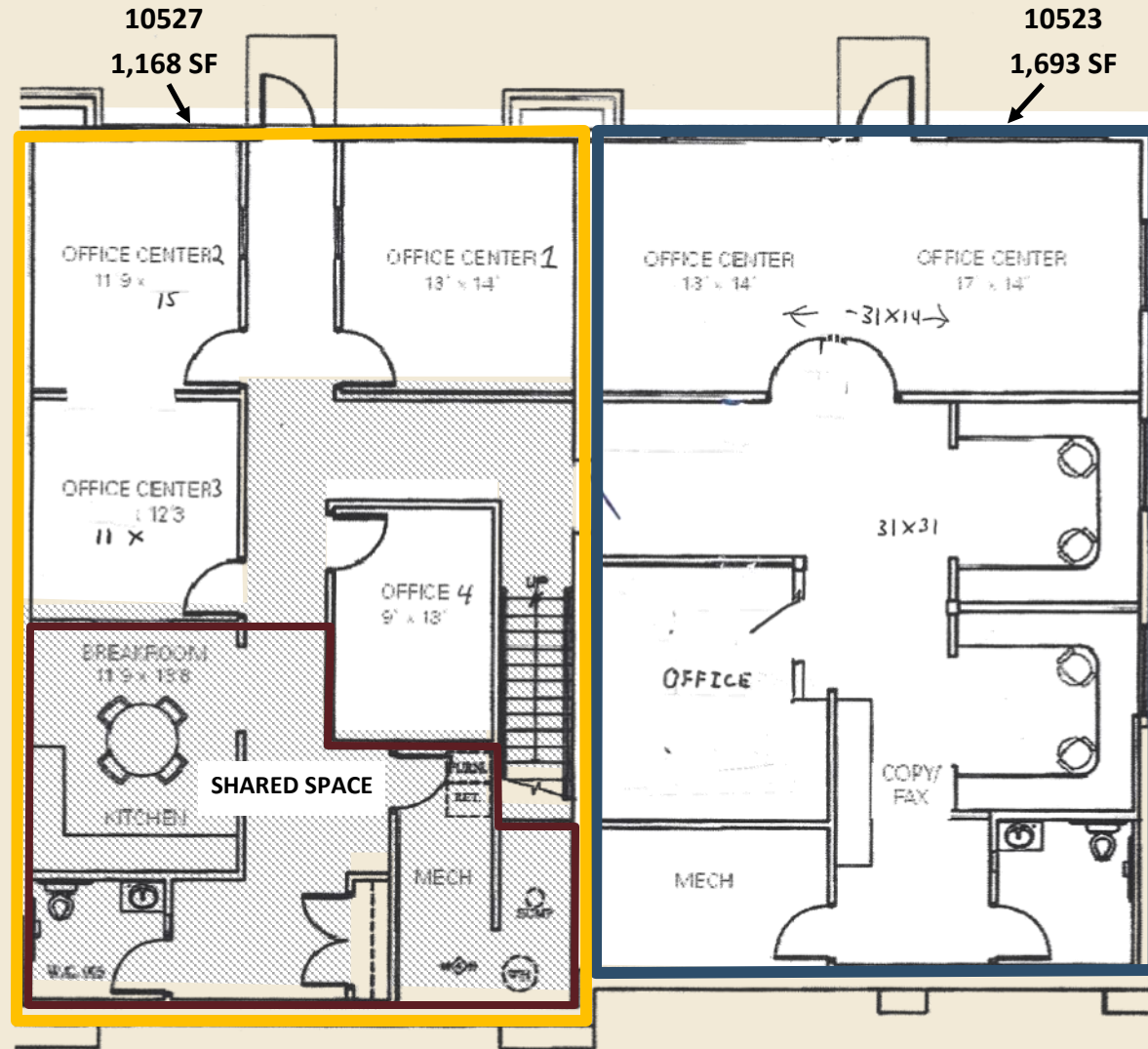
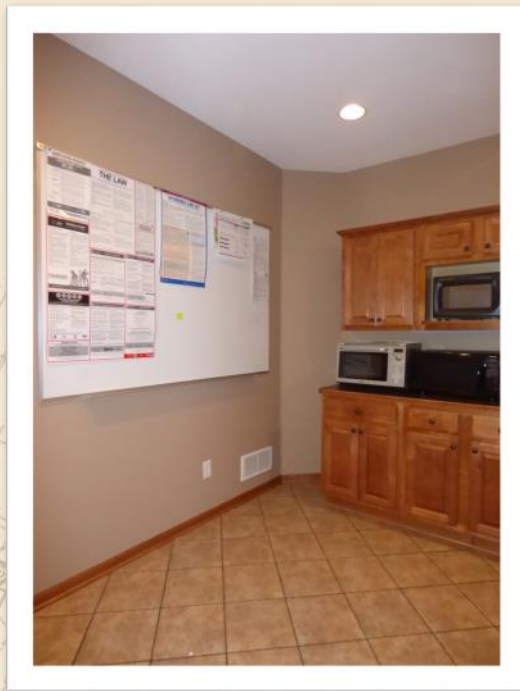
For more information,  
please contact:  
**Bruce Rydeen**  
**952.469.9444**  
brucer@cerron.com

# LAKEVILLE TOWN OFFICES II

10523-27 165TH STREET WEST, LAKEVILLE, MN 55044

## LOWER LEVEL FLOOR PLAN

The lower level offers two separate suite options or the entire space, with access to a shared kitchenette, restroom, and utility room access.



DISCLAIMER: The information contained herein is deemed reliable but is not guaranteed. We have not verified its accuracy nor do we make any warranty or representation about it. You and your tax and legal advisors should conduct your own investigation of the property and transaction.



For more information,  
please contact:  
**Bruce Rydeen**  
**952.469.9444**  
brucer@cerron.com

*let's get started!*

**Bruce Rydeen | 952.469.9444 | brucer@cerron.com**

CERRON Commercial Properties, LLC | 21476 Grenada Avenue | Lakeville, MN 55044



WWW.CERRON.COM