

EXECUTIVE OFFICE SUITES

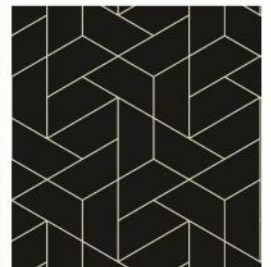
14540 PENNOCK AVENUE, APPLE VALLEY, MN 55124

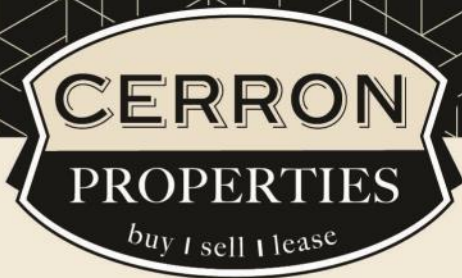


FOR LEASE | EXECUTIVE OFFICE SUITES



CERRON Commercial Properties, LLC | 21476 Grenada Avenue | Lakeville, MN 55044
WWW.CERRON.COM





CERRON Commercial Properties, LLC
21476 Grenada Avenue
Lakeville, MN 55044
www.CERRON.com

■ PROPERTY HIGHLIGHTS

■ Availability:

Suite 102—single office, approx.
294 SF, available 11/1

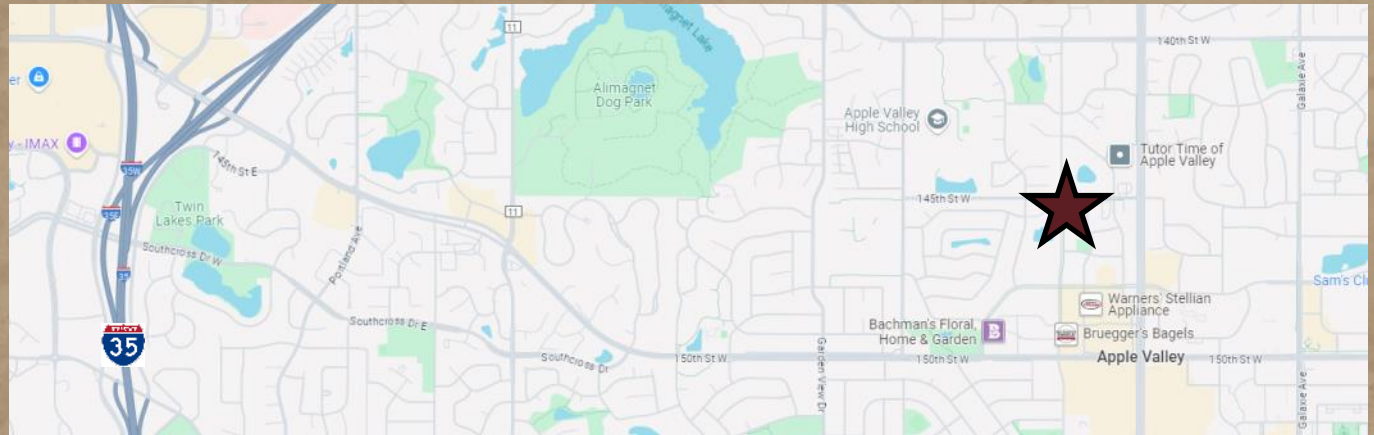
Suite 103—two offices + waiting
area/open space, available 9/1

- Shared restroom—lower level
- Pylon signage available
- Excellent location on Pennock Avenue with easy access to Cedar Avenue
- Near shopping and restaurants
- Lease Rate for Each Suite:
\$600/month gross

EXECUTIVE OFFICE SUITES

14540 PENNOCK AVENUE, APPLE VALLEY, MN 55124

FOR LEASE | PROFESSIONAL OFFICE SUITES



DISCLAIMER: The information contained herein is deemed reliable but is not guaranteed. We have not verified its accuracy nor do we make any warranty or representation about it. You and your tax and legal advisors should conduct your own investigation of the property and transaction.

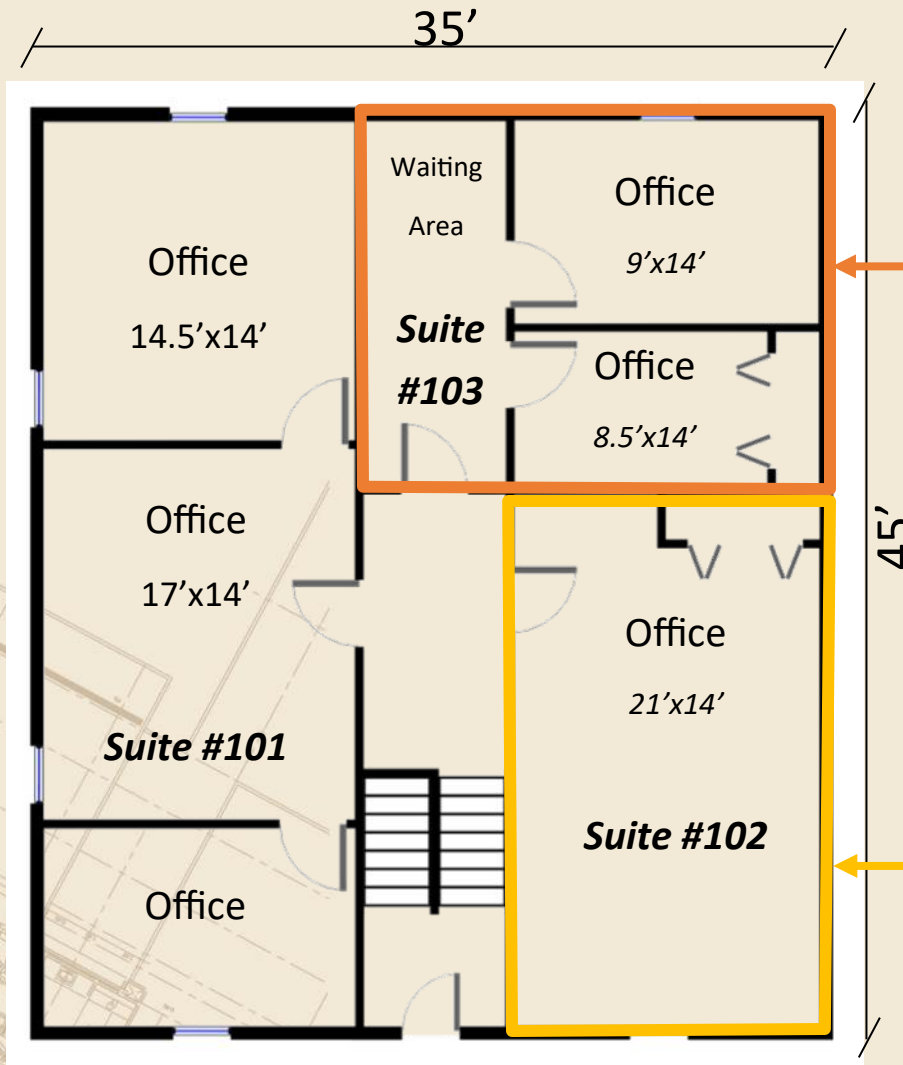


For more information,
please contact:
Bruce Rydeen
952.469.9444
brucer@cerron.com

EXECUTIVE OFFICE SUITES

14540 PENNOCK AVENUE, APPLE VALLEY, MN 55124

FLOOR PLAN



Available:

- Suite 103
- \$600/month—includes all utilities except phone & data

Available:

- Suite 102
- \$600/month—includes all utilities except phone & data



DISCLAIMER: The information contained herein is deemed reliable but is not guaranteed. We have not verified its accuracy nor do we make any warranty or representation about it. You and your tax and legal advisors should conduct your own investigation of the property and transaction.



For more information,
please contact:
Bruce Rydeen
952.469.9444
brucer@cerron.com

EXECUTIVE OFFICE SUITES

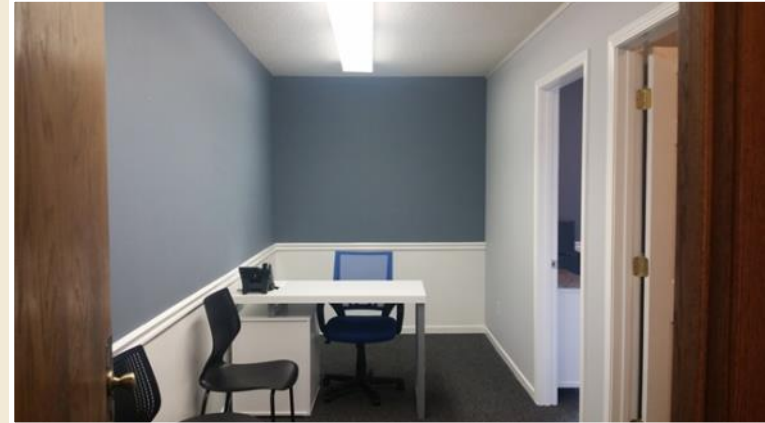
14540 PENNOCK AVENUE, APPLE VALLEY, MN 55124

INTERIOR PHOTOS

SUITE 102



SUITE 103



DISCLAIMER: The information contained herein is deemed reliable but is not guaranteed. We have not verified its accuracy nor do we make any warranty or representation about it. You and your tax and legal advisors should conduct your own investigation of the property and transaction.

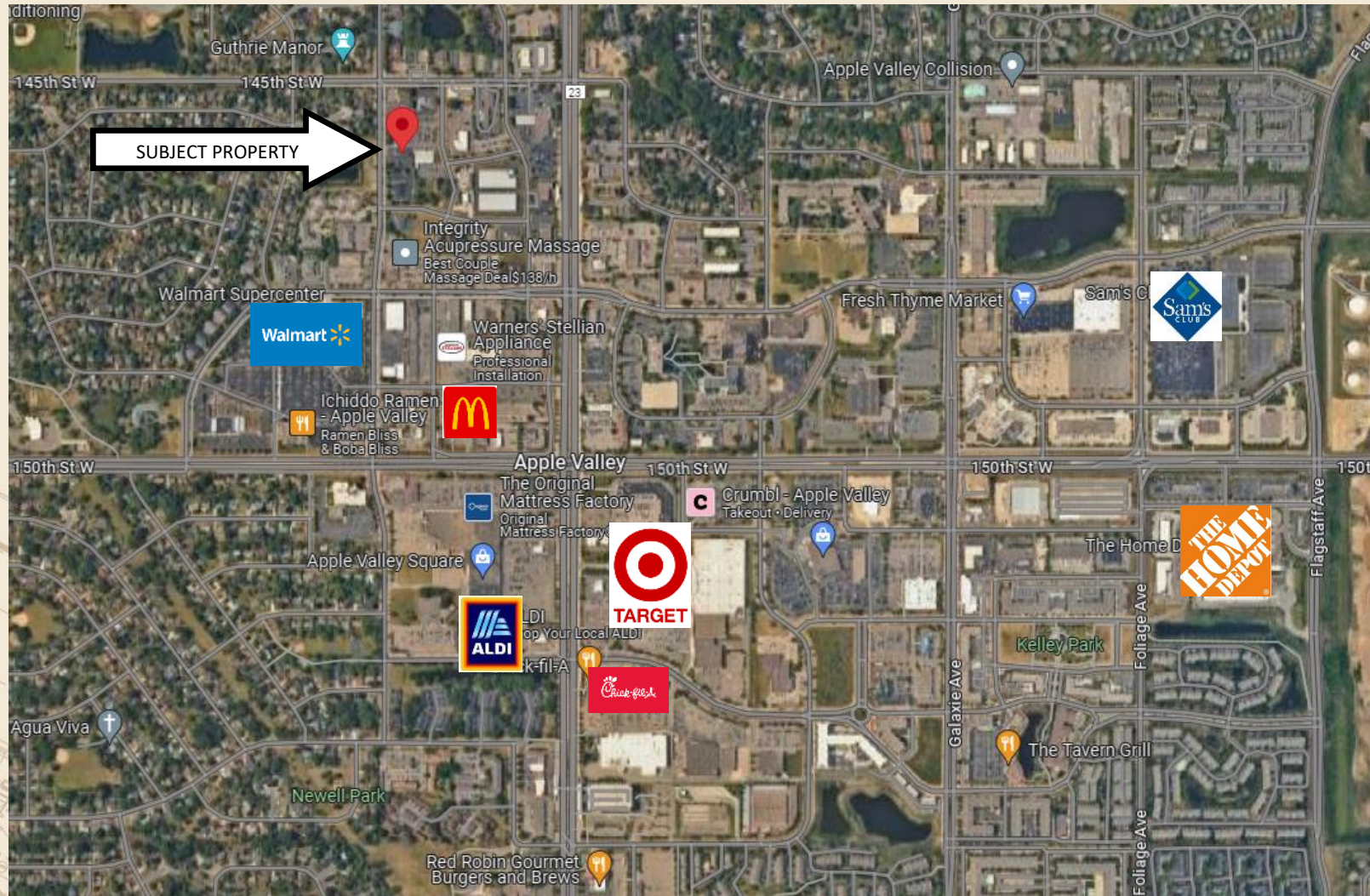


For more information,
please contact:
Bruce Rydeen
952.469.9444
brucer@cerron.com

EXECUTIVE OFFICE SUITES

14540 PENNOCK AVENUE, APPLE VALLEY, MN 55124

AREA BUSINESS MAP



DISCLAIMER: The information contained herein is deemed reliable but is not guaranteed. We have not verified its accuracy nor do we make any warranty or representation about it. You and your tax and legal advisors should conduct your own investigation of the property and transaction.



For more information,
please contact:
Bruce Rydeen
952.469.9444
brucer@cerron.com

let's get started!

Bruce Rydeen | 952.469.9444 | brucer@cerron.com

CERRON Commercial Properties, LLC | 21476 Grenada Avenue | Lakeville, MN 55044



WWW.CERRON.COM