

# EXECUTIVE OFFICE SUITES

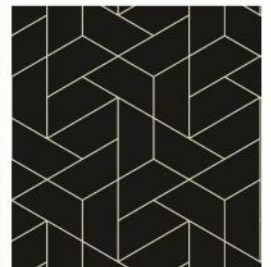
14540 PENNOCK AVENUE, APPLE VALLEY, MN 55124

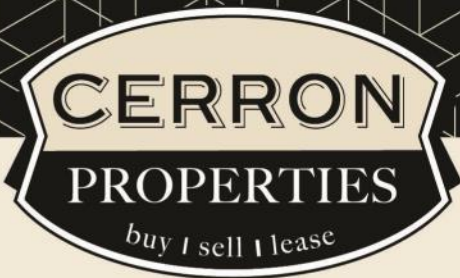


FOR LEASE | EXECUTIVE OFFICE SUITES



CERRON Commercial Properties, LLC | 21476 Grenada Avenue | Lakeville, MN 55044  
[WWW.CERRON.COM](http://WWW.CERRON.COM)





CERRON Commercial Properties, LLC  
21476 Grenada Avenue  
Lakeville, MN 55044  
www.CERRON.com

## ■ PROPERTY HIGHLIGHTS

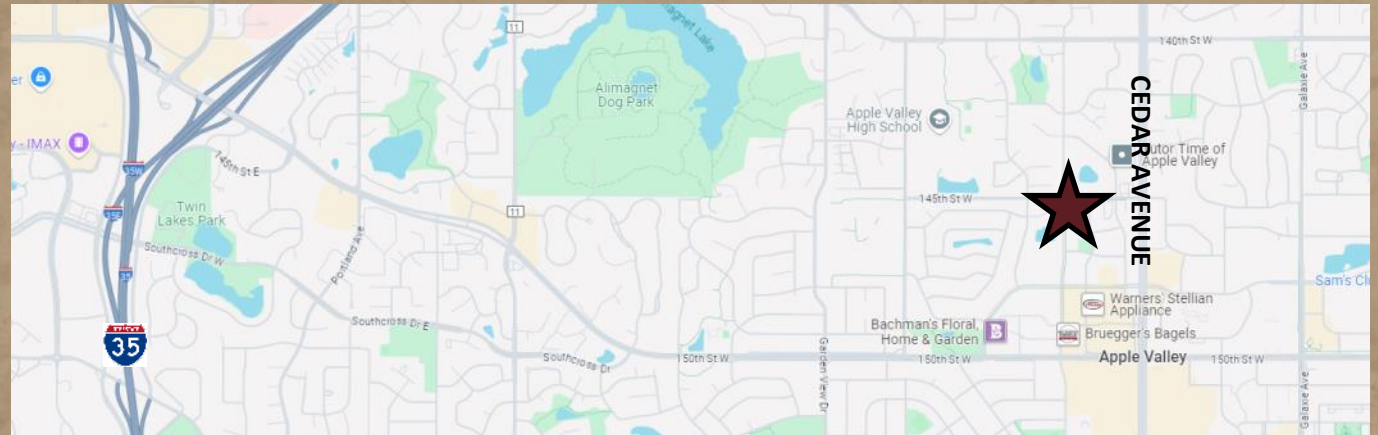
- Current Availability:  
Suite 102—single office, approx.  
294 SF, available 11/1
- Shared restroom—lower level
- Pylon signage available
- Excellent location on Pennock  
Avenue with easy access to  
Cedar Avenue
- Near shopping and restaurants
- Lease Rate: \$600/month gross



# EXECUTIVE OFFICE SUITES

14540 PENNOCK AVENUE, APPLE VALLEY, MN 55124

FOR LEASE | PROFESSIONAL OFFICE SUITES



DISCLAIMER: The information contained herein is deemed reliable but is not guaranteed. We have not verified its accuracy nor do we make any warranty or representation about it. You and your tax and legal advisors should conduct your own investigation of the property and transaction.

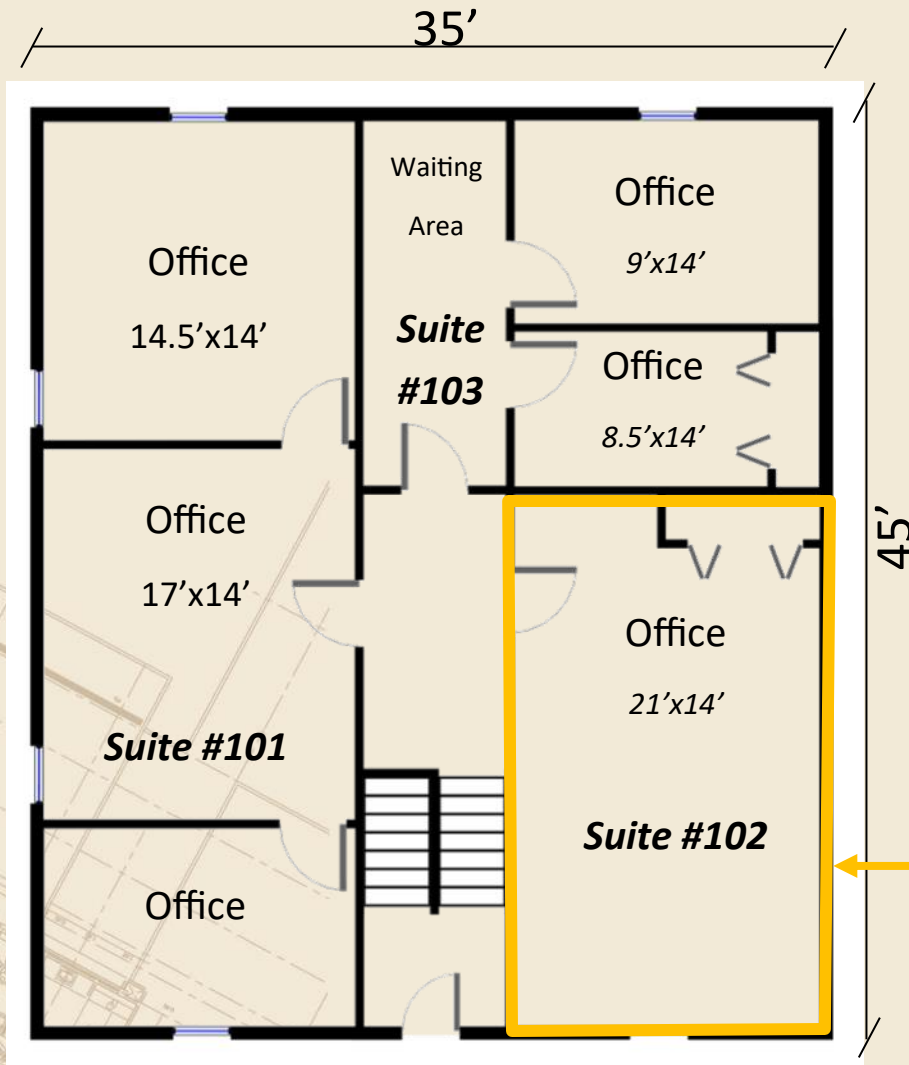


For more information,  
please contact:  
**Bruce Rydeen**  
**952.469.9444**  
brucer@cerron.com

# EXECUTIVE OFFICE SUITES

14540 PENNOCK AVENUE, APPLE VALLEY, MN 55124

## FLOOR PLAN



**Available:**

- Suite 102
- \$600/month—includes all utilities except phone & data

DISCLAIMER: The information contained herein is deemed reliable but is not guaranteed. We have not verified its accuracy nor do we make any warranty or representation about it. You and your tax and legal advisors should conduct your own investigation of the property and transaction.

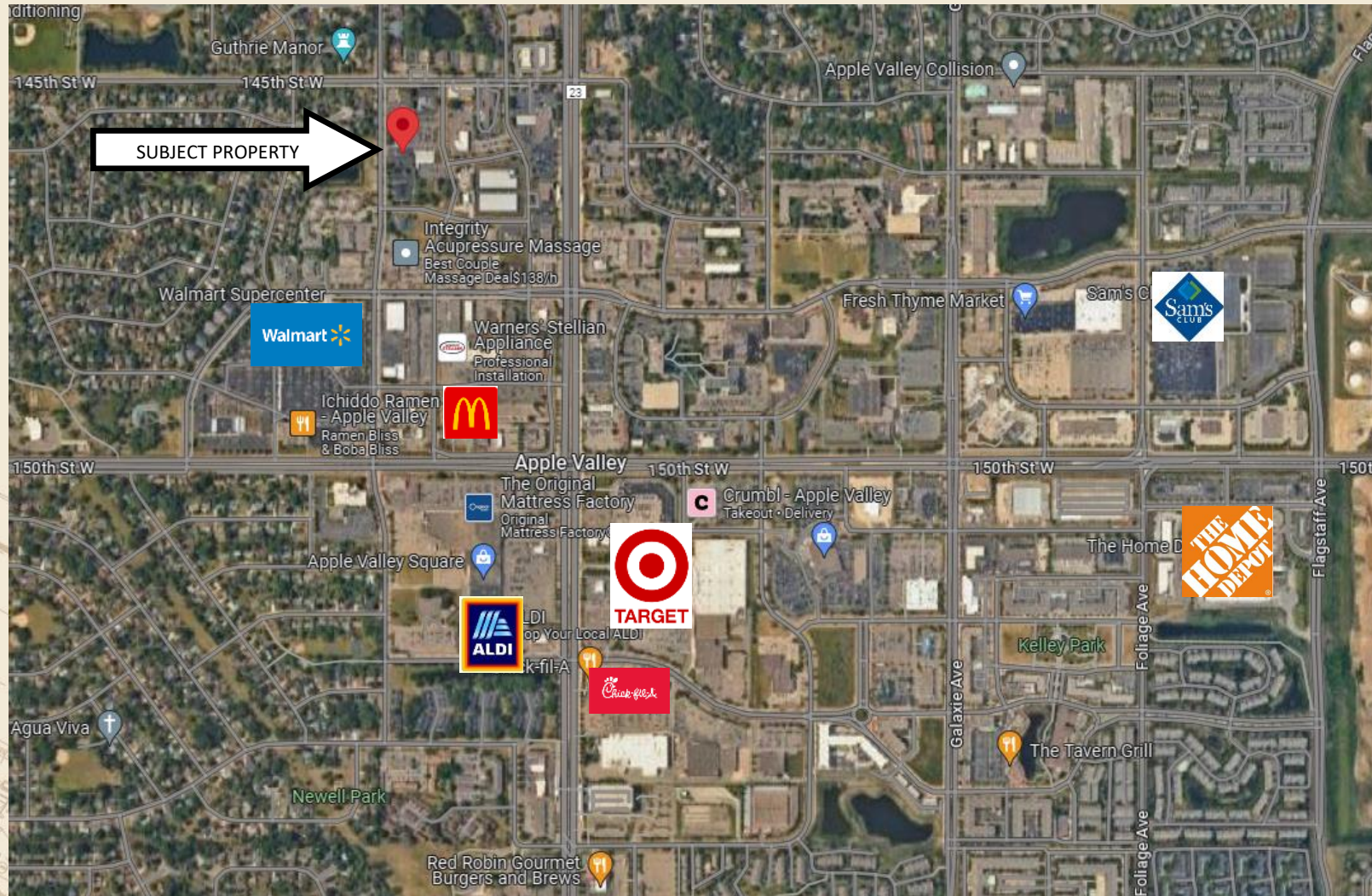


For more information,  
please contact:  
**Bruce Rydeen**  
**952.469.9444**  
brucer@cerron.com

# EXECUTIVE OFFICE SUITES

14540 PENNOCK AVENUE, APPLE VALLEY, MN 55124

## AREA BUSINESS MAP



DISCLAIMER: The information contained herein is deemed reliable but is not guaranteed. We have not verified its accuracy nor do we make any warranty or representation about it. You and your tax and legal advisors should conduct your own investigation of the property and transaction.



For more information,  
please contact:  
**Bruce Rydeen**  
**952.469.9444**  
brucer@cerron.com

*let's get started!*

**Bruce Rydeen | 952.469.9444 | brucer@cerron.com**

CERRON Commercial Properties, LLC | 21476 Grenada Avenue | Lakeville, MN 55044



WWW.CERRON.COM