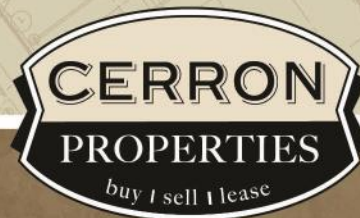


EXECUTIVE OFFICE SUITES

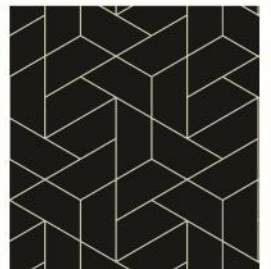
14540 PENNOCK AVENUE, APPLE VALLEY, MN 55124

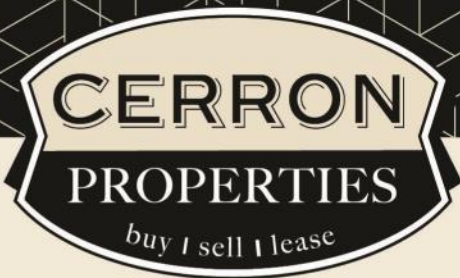


FOR LEASE | EXECUTIVE OFFICE SUITE



CERRON Commercial Properties, LLC | 21476 Grenada Avenue | Lakeville, MN 55044
WWW.CERRON.COM





CERRON Commercial Properties, LLC
21476 Grenada Avenue
Lakeville, MN 55044
www.CERRON.com

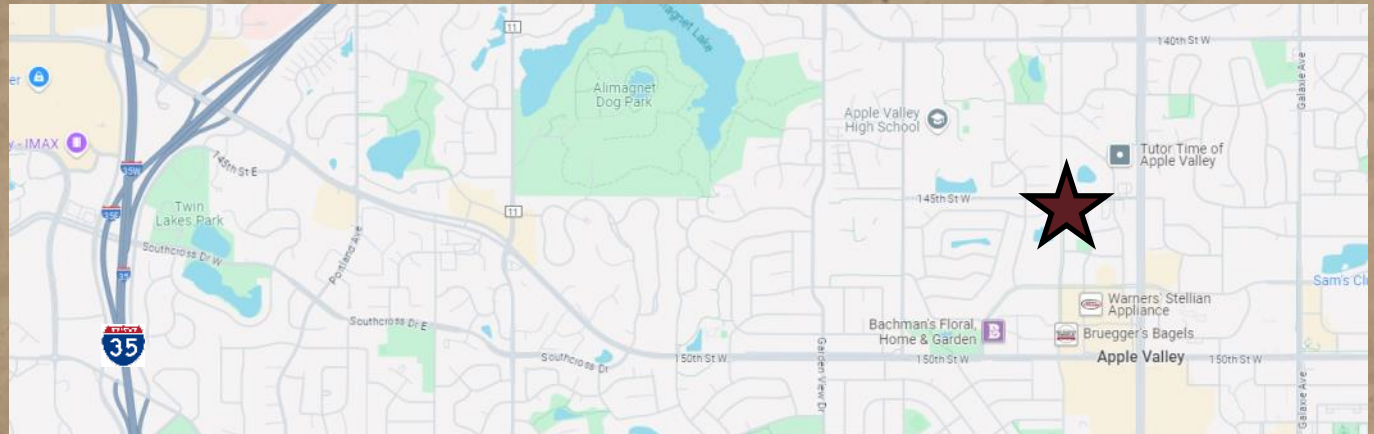
■ PROPERTY HIGHLIGHTS

- Availability: Suite 102—
One Large Office (21'x14')
(available 11/1/2024)
- Shared restroom on lower level
- Pylon signage available
- Excellent location on
Pennock Avenue with easy
access to Cedar Avenue
- Near shopping and
restaurants
- Lease Rate: \$600/month
gross

EXECUTIVE OFFICE SUITES

14540 PENNOCK AVENUE, APPLE VALLEY, MN 55124

FOR LEASE | PROFESSIONAL OFFICE SUITES



DISCLAIMER: The information contained herein is deemed reliable but is not guaranteed. We have not verified its accuracy nor do we make any warranty or representation about it. You and your tax and legal advisors should conduct your own investigation of the property and transaction.

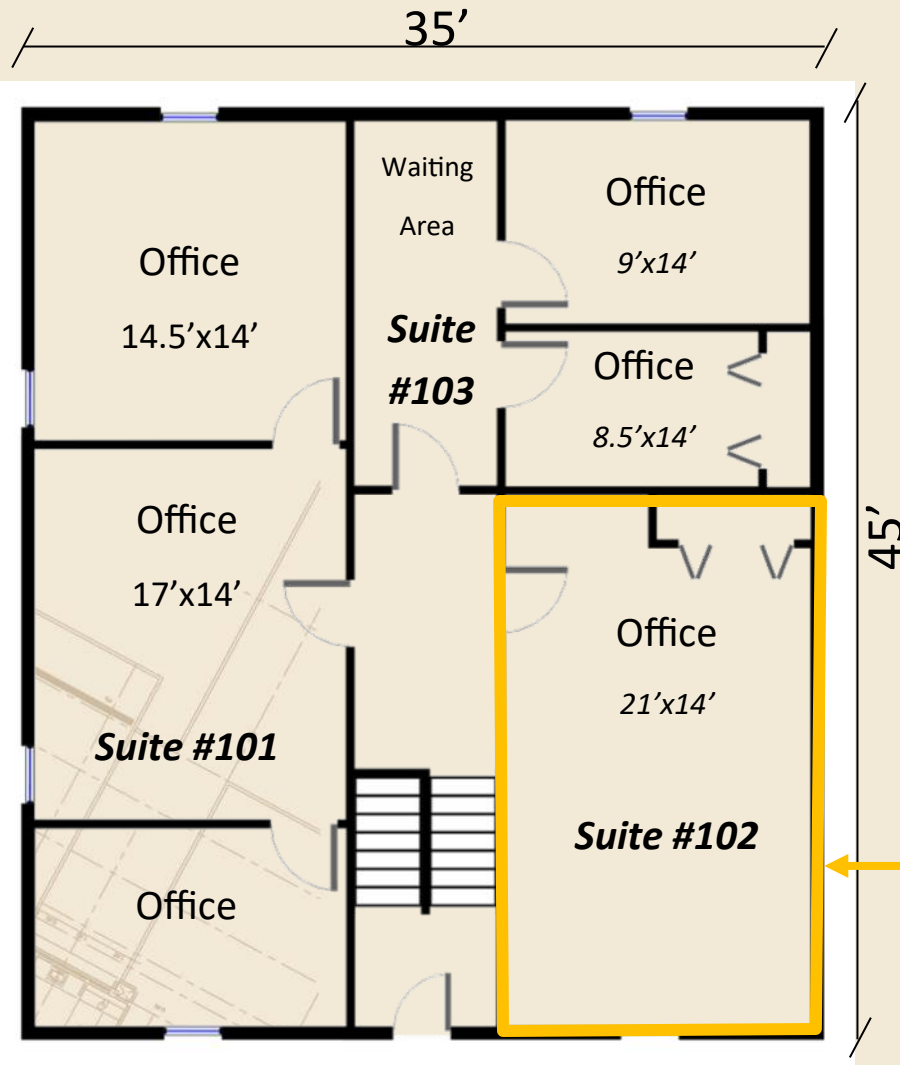


For more information,
please contact:
Bruce Rydeen
952.469.9444
brucer@cerron.com

FLOOR PLAN

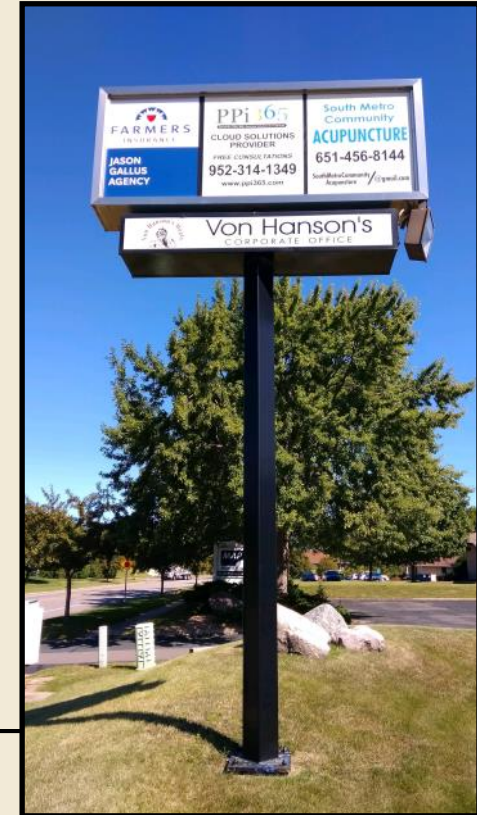
EXECUTIVE OFFICE SUITES

14540 PENNOCK AVENUE, APPLE VALLEY, MN 55124



Available:

- Suite 102
- \$600/month—including all utilities except phone & data



DISCLAIMER: The information contained herein is deemed reliable but is not guaranteed. We have not verified its accuracy nor do we make any warranty or representation about it. You and your tax and legal advisors should conduct your own investigation of the property and transaction.

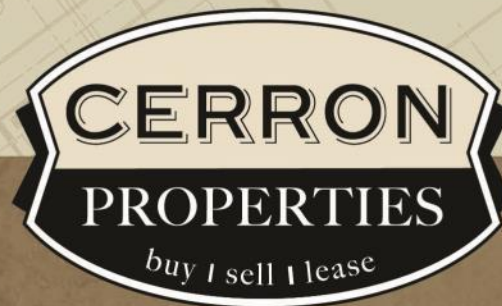


For more information,
please contact:
Bruce Rydeen
952.469.9444
brucer@cerron.com

let's get started!

Bruce Rydeen | 952.469.9444 | brucer@cerron.com

CERRON Commercial Properties, LLC | 21476 Grenada Avenue | Lakeville, MN 55044



WWW.CERRON.COM