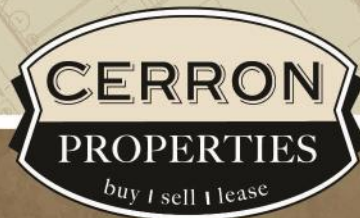


OFFICE / SHOWROOM NEAR DOWNTOWN LAKEVILLE

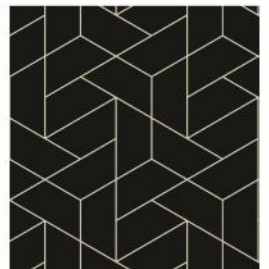
8485 WEST 210TH STREET, SUITE D, LAKEVILLE, MN 55044

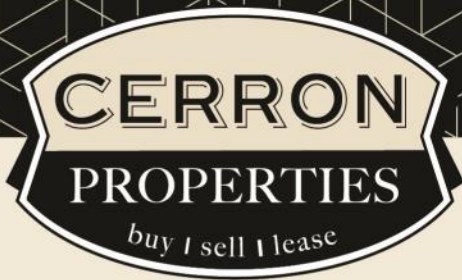


FOR LEASE | OFFICE SHOWROOM w/DRIVE-IN DOOR



CERRON Commercial Properties, LLC | 21476 Grenada Avenue | Lakeville, MN 55044
WWW.CERRON.COM





OFFICE / SHOWROOM NEAR DOWNTOWN LAKEVILLE

8485 WEST 210TH STREET, SUITE D, LAKEVILLE, MN 55044

FOR LEASE | OFFICE SHOWROOM w-DRIVE-IN DOOR

CERRON Commercial Properties, LLC
21476 Grenada Avenue
Lakeville, MN 55044
www.CERRON.com

■ PROPERTY HIGHLIGHTS

- Approx. 2,376 SF
- Office Showroom Space with Drive-In Door (8'x10')
- Private Restroom
- Zoned C-3 (General Commercial District)
- Ample parking
- Excellent visibility & proximity to downtown Lakeville
- NW side of building with patio and private entrance
- Available immediately
- \$2,300/month gross lease rate



DISCLAIMER: The information contained herein is deemed reliable but is not guaranteed. We have not verified its accuracy nor do we make any warranty or representation about it. You and your tax and legal advisors should conduct your own investigation of the property and transaction.



For more information,
please contact:
Roz Peterson
612.708.5281
rozp@cerron.com

OFFICE / SHOWROOM NEAR DOWNTOWN LAKEVILLE

8485 WEST 210TH STREET, SUITE D, LAKEVILLE, MN 55044

SUMMARY



■ TRAFFIC COUNTS:

- 6,446 vpd @ 210th Street West (CR 50)

■ DEMOGRAPHICS:

	1 Mile	3 Mile	5 Mile
Population	3,118	12,286	33,563
Median HH Income	\$72,836.33	\$92,333.18	\$102,030.26
Avg. HH Income	\$79,379.00	\$98,061.27	\$106,033.84

DISCLAIMER: The information contained herein is deemed reliable but is not guaranteed. We have not verified its accuracy nor do we make any warranty or representation about it. You and your tax and legal advisors should conduct your own investigation of the property and transaction.

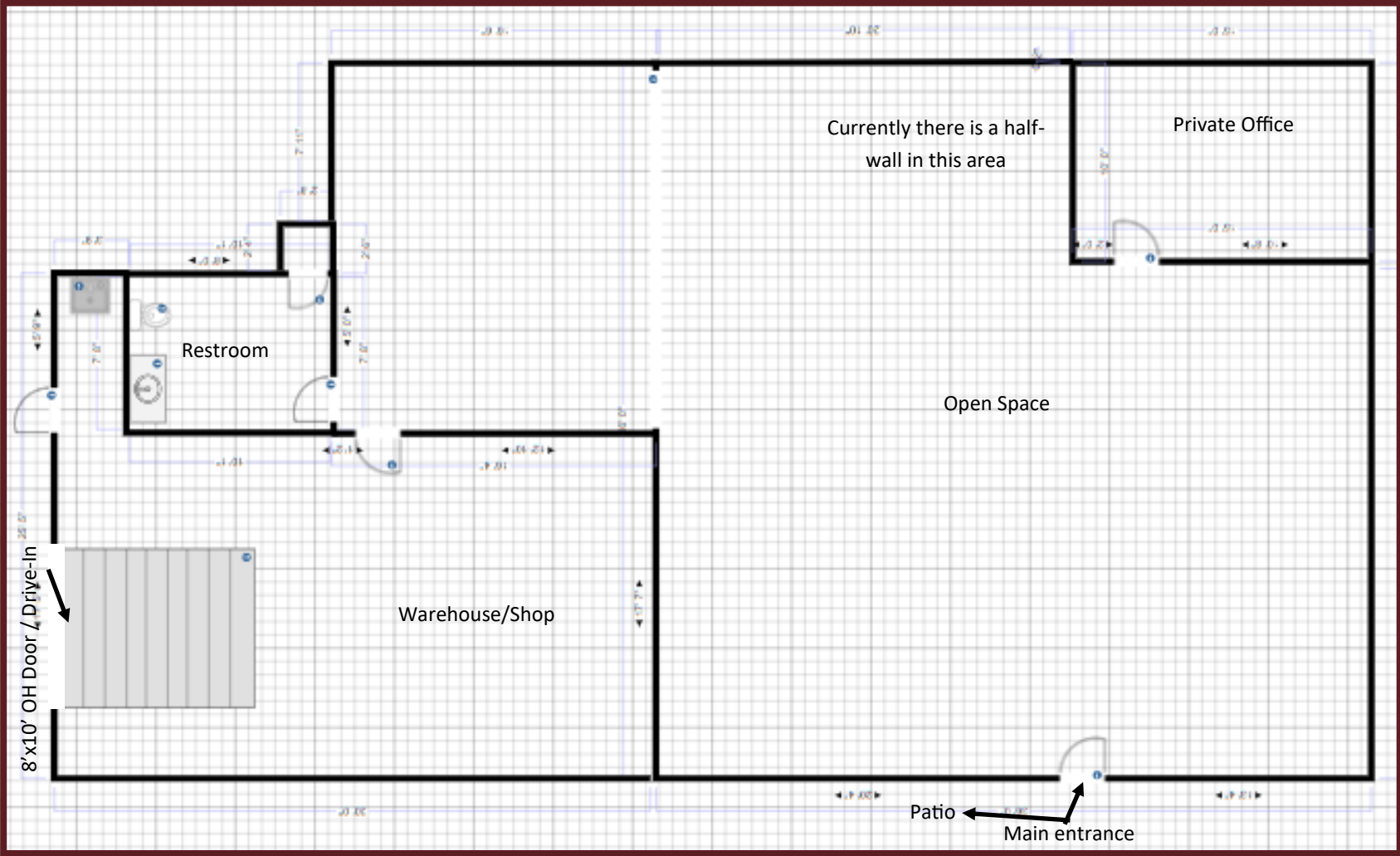


For more information,
please contact:
Roz Peterson
612.708.5281
rozp@cerron.com

OFFICE / SHOWROOM NEAR DOWNTOWN LAKEVILLE

8485 WEST 210TH STREET, SUITE D, LAKEVILLE, MN 55044

FLOOR PLAN



DISCLAIMER: The information contained herein is deemed reliable but is not guaranteed. We have not verified its accuracy nor do we make any warranty or representation about it. You and your tax and legal advisors should conduct your own investigation of the property and transaction.

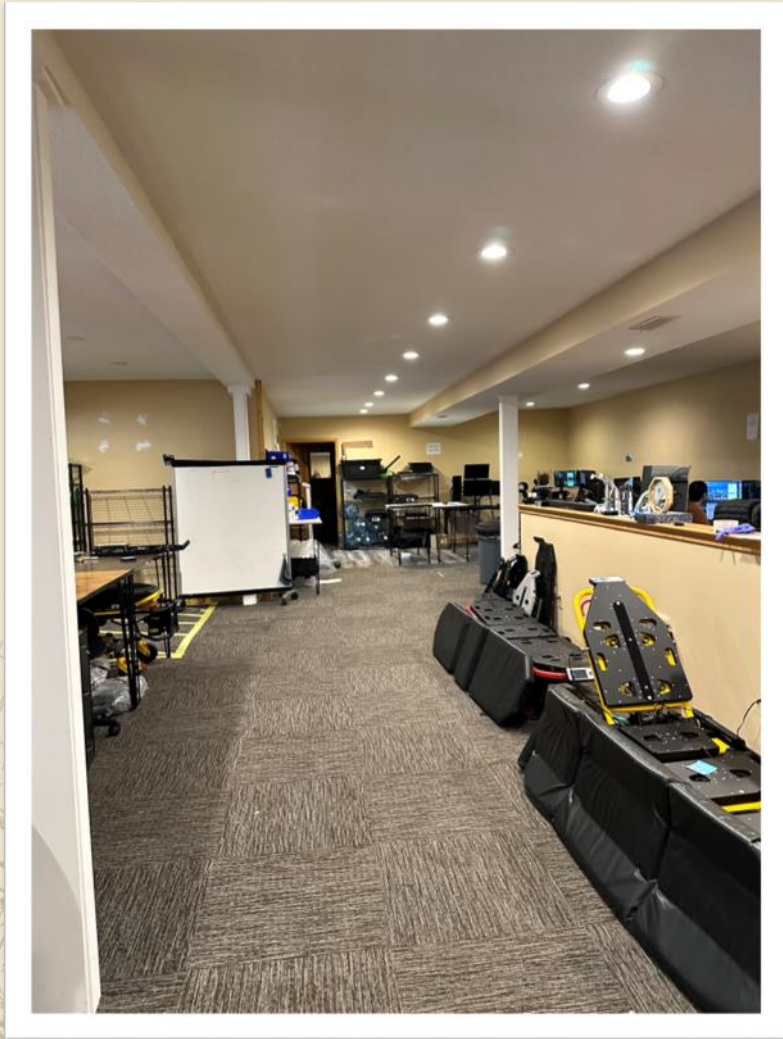


For more information,
please contact:
Roz Peterson
612.708.5281
rozp@cerron.com

OFFICE / SHOWROOM NEAR DOWNTOWN LAKEVILLE

8485 WEST 210TH STREET, SUITE D, LAKEVILLE, MN 55044

PHOTOS



DISCLAIMER: The information contained herein is deemed reliable but is not guaranteed. We have not verified its accuracy nor do we make any warranty or representation about it. You and your tax and legal advisors should conduct your own investigation of the property and transaction.



For more information,
please contact:

Roz Peterson
612.708.5281

rozp@cerron.com

OFFICE / SHOWROOM NEAR DOWNTOWN LAKEVILLE

8485 WEST 210TH STREET, SUITE D, LAKEVILLE, MN 55044

AREA MAP



DISCLAIMER: The information contained herein is deemed reliable but is not guaranteed. We have not verified its accuracy nor do we make any warranty or representation about it. You and your tax and legal advisors should conduct your own investigation of the property and transaction.



For more information,
please contact:
Roz Peterson
612.708.5281
rozp@cerron.com