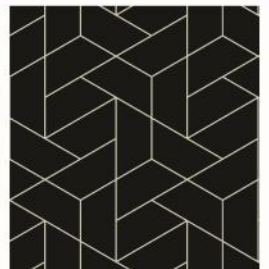


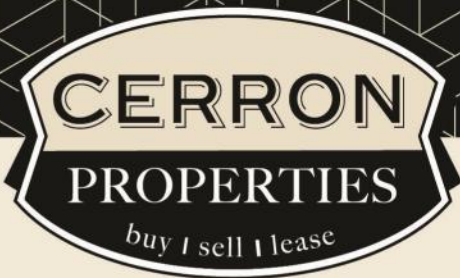
RETAIL SPACE FOR LEASE

8645 LYNDALE AVENUE S, BLOOMINGTON, MN 55420



CERRON Commercial Properties, LLC | 21476 Grenada Avenue | Lakeville, MN 55044
WWW.CERRON.COM





CERRON Commercial Properties, LLC
21476 Grenada Avenue
Lakeville, MN 55044
www.CERRON.com

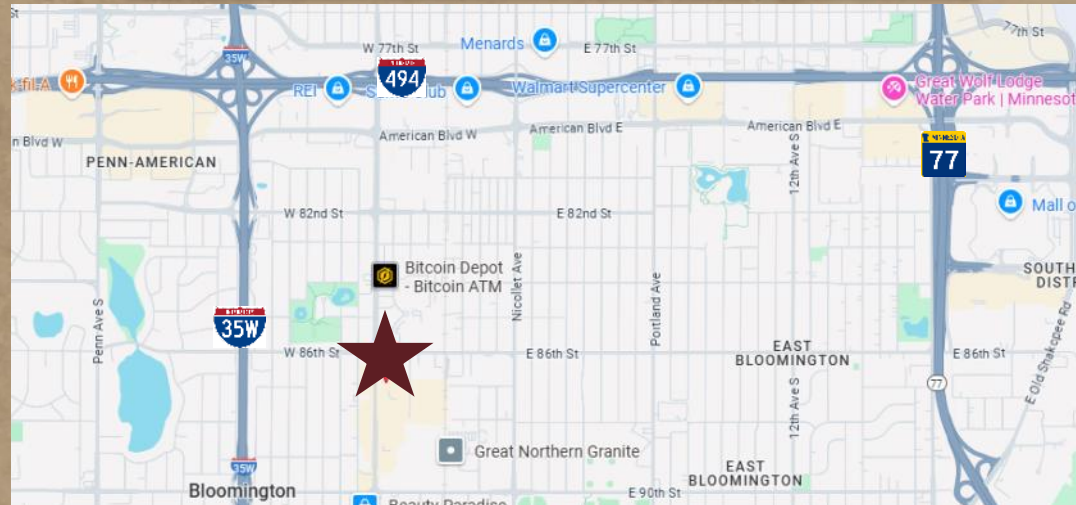
■ PROPERTY HIGHLIGHTS

- Approx. 5,000 SF available
- Former auto parts store
- High traffic counts: 16,100 vpd on Lyndale Ave
- Excellent location at 86th St W & Lyndale Ave
- Zoned Transitional Industrial
- Ample parking
- Handicap restroom
- Open retail show floor
- 12' drop ceiling in show floor area
- Manager's office
- Large storage area in back with 13.5' clear height
- Lease Rate: \$13.50/SF Net + \$4.72/SF CAM = \$7,592/month Total Rent

RETAIL SPACE

8645 LYNDALE AVENUE S, BLOOMINGTON, MN 55420

FOR LEASE | RETAIL



DISCLAIMER: The information contained herein is deemed reliable but is not guaranteed. We have not verified its accuracy nor do we make any warranty or representation about it. You and your tax and legal advisors should conduct your own investigation of the property and transaction.

For more information,
please contact:
Rocky Ranch
952.583.6135
rockyr@cerron.com



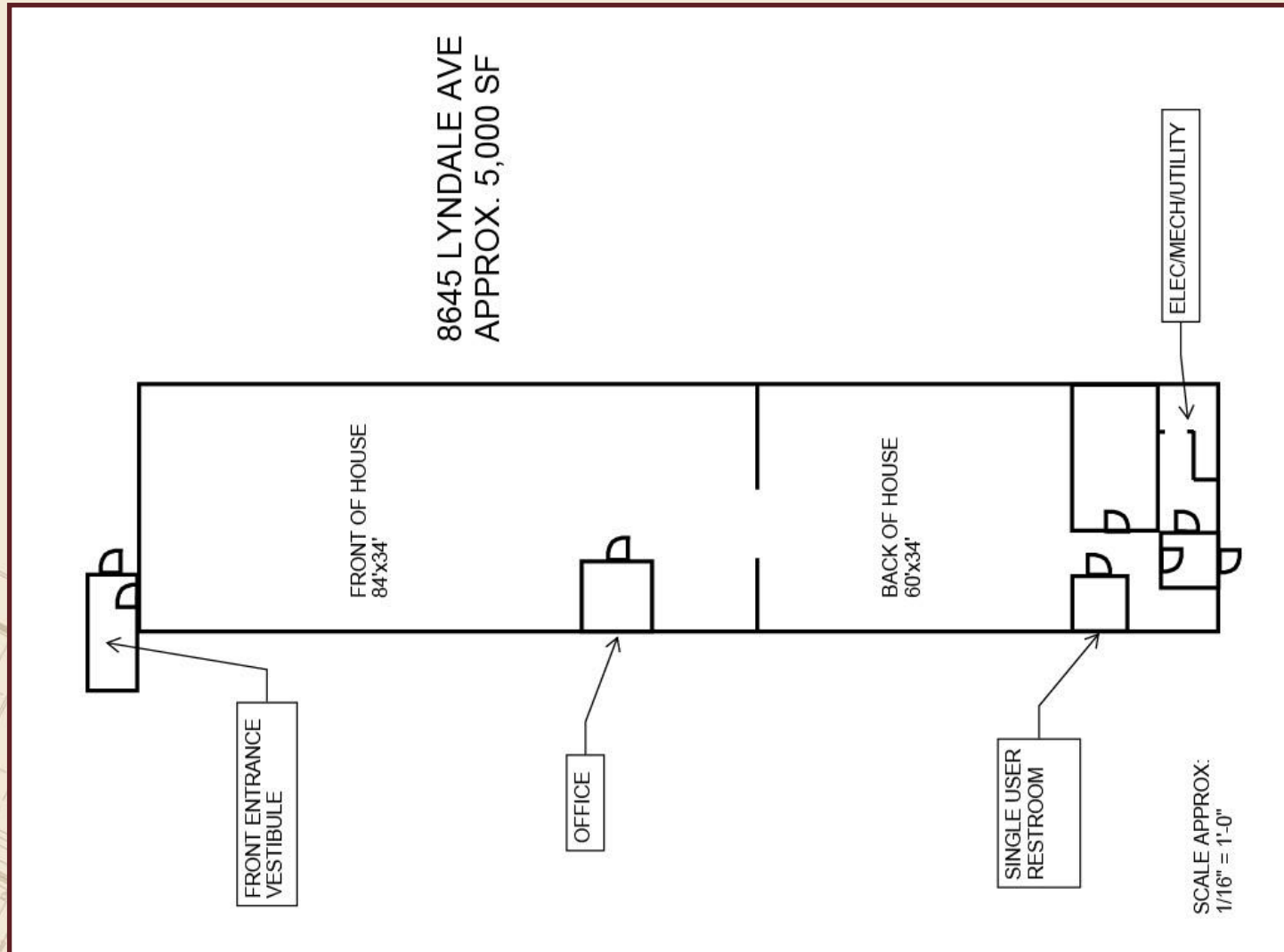
For more information,
please contact:
Darby Regan
952.583.6137
darbyr@cerron.com



RETAIL SPACE

FLOOR PLAN

8645 LYNDALE AVENUE S, BLOOMINGTON, MN 55420



Please note: Floor plans are for illustration purposes and all dimensions are approximate.
 DISCLAIMER: The information contained herein is deemed reliable but is not guaranteed. We have not verified its accuracy nor do we make any warranty or representation about it. You and your tax and legal advisors should conduct your own investigation of the property and transaction.

For more information,
 please contact:
Rocky Ranch
 952.583.6135
 rockyr@cerron.com



For more information,
 please contact:
Darby Regan
 952.583.6137
 darbyr@cerron.com

DEMOS & ZONING

RETAIL SPACE

8645 LYNDALE AVENUE S, BLOOMINGTON, MN 55420

Demographics	1 Mile	3 Mile	5 Mile
Population	9,812	99,121	222,462
Med HH Income	\$77,525	\$80,404	\$98,964
Ave HH Income	\$96,823	\$106,566	\$137,414

Source: Esri 2024

Traffic Counts	Lyndale Ave S
Vehicles Per Day	16,100

Source: Kalibrate Technologies 2024



Zoned Transitional Industrial District—Permitted Use Highlights:

- TI Zoning District is pretty permissive. Really the main uses that would **not be allowed** are **auto-oriented uses like vehicle repair or auto body shops**
- Warehousing, manufacturing, research are all still permitted like our other industrial districts
- TI allows for more commercial and entertainment uses like breweries, indoor recreation, daycares, sports training, health clubs, catering businesses, etc.
- Some of the new cannabis-related businesses from the Office of Cannabis Management are conditional in the TI Zoning District: cannabis combination business, cannabis manufacturer and cannabis testing facility

* Contact Rocky or Darby for full permitted-use chart

DISCLAIMER: The information contained herein is deemed reliable but is not guaranteed. We have not verified its accuracy nor do we make any warranty or representation about it. You and your tax and legal advisors should conduct your own investigation of the property and transaction.

For more information,
please contact:
Rocky Ranch
952.583.6135
rockyr@cerron.com

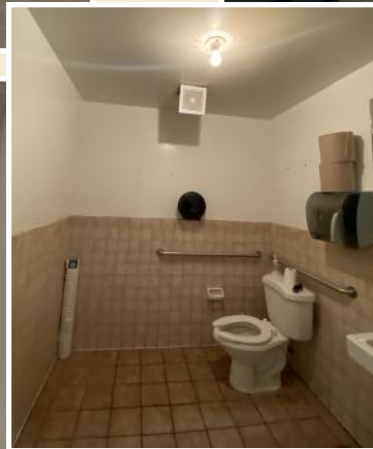


For more information,
please contact:
Darby Regan
952.583.6137
darbyr@cerron.com

RETAIL SPACE

8645 LYNDALE AVENUE S, BLOOMINGTON, MN 55420

INTERIOR PICS



DISCLAIMER: The information contained herein is deemed reliable but is not guaranteed. We have not verified its accuracy nor do we make any warranty or representation about it. You and your tax and legal advisors should conduct your own investigation of the property and transaction.

For more information,
please contact:
Rocky Ranch
952.583.6135
rockyr@cerron.com



For more information,
please contact:
Darby Regan
952.583.6137
darbyr@cerron.com



RETAIL SPACE

8645 LYNDALE AVENUE S, BLOOMINGTON, MN 55420

EXTERIOR PICS



DISCLAIMER: The information contained herein is deemed reliable but is not guaranteed. We have not verified its accuracy nor do we make any warranty or representation about it. You and your tax and legal advisors should conduct your own investigation of the property and transaction.

For more information,
please contact:
Rocky Ranch
952.583.6135
rockyr@cerron.com



For more information,
please contact:
Darby Regan
952.583.6137
darbyr@cerron.com

AREA MAP

RETAIL SPACE

8645 LYNDALE AVENUE S, BLOOMINGTON, MN 55420



DISCLAIMER: The information contained herein is deemed reliable but is not guaranteed. We have not verified its accuracy nor do we make any warranty or representation about it. You and your tax and legal advisors should conduct your own investigation of the property and transaction.

For more information,
please contact:
Rocky Ranch
952.583.6135
rockyr@cerron.com



For more information,
please contact:
Darby Regan
952.583.6137
darbyr@cerron.com

let's get started!

Rocky Ranch | 952.583.6135 | rockyr@cerron.com

CERRON Commercial Properties, LLC | 21476 Grenada Avenue | Lakeville, MN 55044

Darby Regan | 952.583.6137 | darbyr@cerron.com



WWW.CERRON.COM